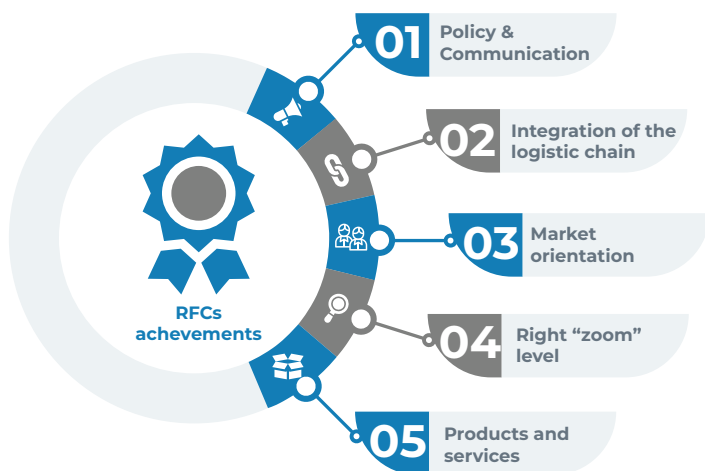


What's next

- Capacity Study
- Integrated TPM cooperation
- Cooperation with Terminals (in planning and operation)
- Common Projects with other RFCs

Cooperation with RFCs



01 - Increase of transparency towards external stakeholders, fostering of attention to rail freight and helping setting common goals

02 - Improved communication among all stakeholders who now tend to act as "one industry"

03 - Enhancement of the business orientation and strengthening of the market knowledge

04 - Right level to address specific problems: general guidelines set at Network level are addressed at corridor level, profiting of synergies and taking into account specificities

05 - Fostering harmonization, increase of capacity offer and cooperation between IMs especially at borders

IT TOOLS



PCS is a web-based system for international path request coordination and is the only tool that can be used to apply for the RFC offer.



The Train Information System is a web-based application that supports international train management by delivering real-time train data concerning international passenger and freight trains.



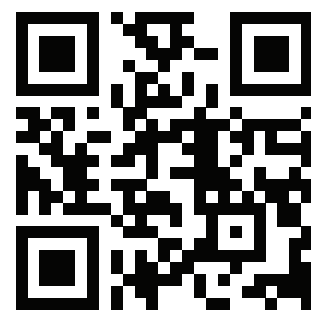
The Charging Information System is an infrastructure charging information system for Applicants, Infrastructure Managers and Allocation Bodies.



The Customer Information Platform is an interactive, Internet-based information tool providing information about participating RFCs.

Contacts

Visit us at:



www.rfc5.eu



Baltic Adriatic Rail Freight Corridor

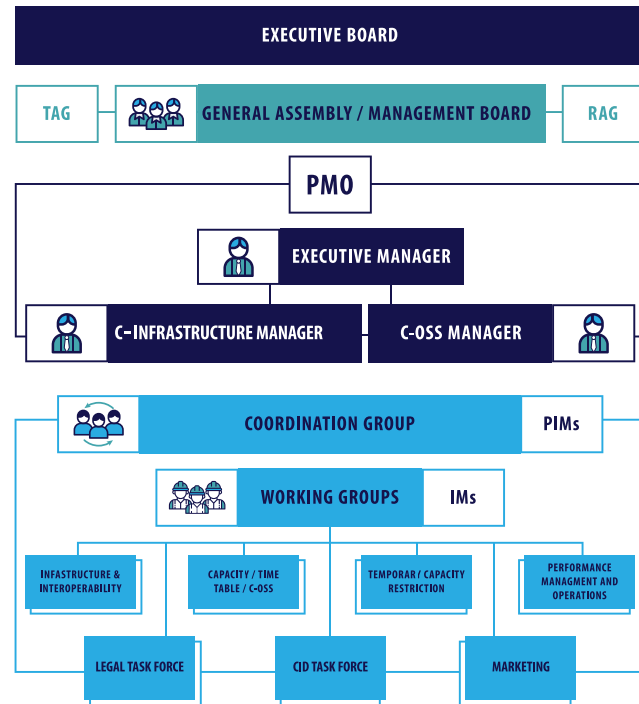
Moving goods between two seas!



Co-financed by the Connecting Europe Facility of the European Union

Who we are

The Rail Freight Corridor Baltic-Adriatic is an European Economic Interest Grouping (EEIG) composed of six Infrastructure Managers (from Italy, Austria, Slovenia, Czech Republic, Slovakia and Poland) whose aim is to contribute to the modal shift of freight transport from road to rail.



Facts and figures

Infrastructure

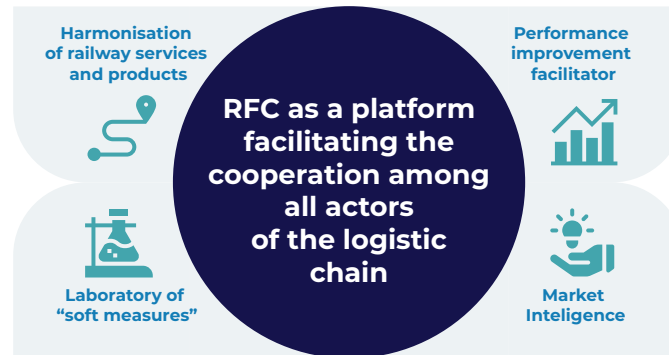
- 4,820 km
- Around 40 Terminals
- 8 Sea Ports

Current traffics

- Circulated trains (2018): 79.550 (Source: TMS - 2020)
- Transported goods (2018): 116 mln Ton (Source: TMS 2020)
- Road/rail modal split (2018): 67%/33% (Source: TMS 2020)

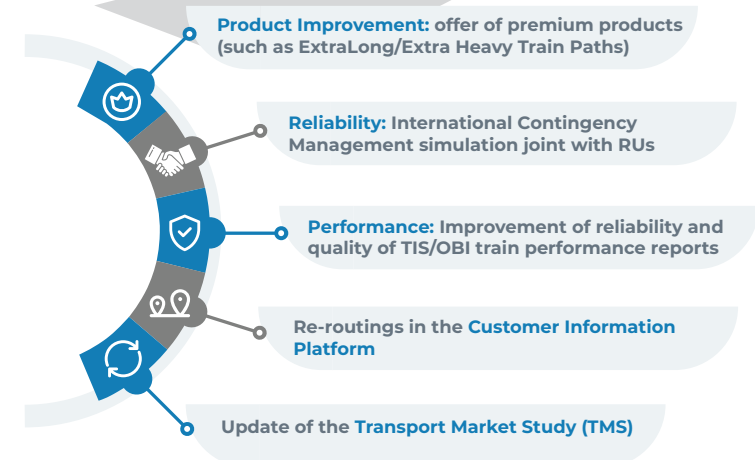
Our mission

Fostering international cooperation in several areas: capacity management, operations & performance, infrastructure & interoperability. The main aim is to offer customers **higher quality** international paths, make **more capacity**, increase **reliability** of transport and remove the main **bottlenecks**.



Harmonisation of railway services and products	Capacity planning and allocation	Definition, offer and allocation of international pre-arranged and harmonised train paths for the annual timetable and a reserve capacity (slots) offer
	Operations	Support to coordination of planned infrastructure works and their publication
	Punctuality	Promotion of the harmonisation of the operational rules at border, promotion of the real time monitoring of trains along the corridors (TIS)
Performance Monitoring	Corridor KPIs	Punctuality monitoring and analysis of the delays
	Satisfaction Survey	Elaboration of Corridor KPIs, both harmonised with the other RFC's and specific for Baltic-Adriatic, covering different areas (Capacity, Operation, Infrastructure, Market)
	Traffic Management	Yearly satisfaction survey of the Corridor's services, submitted to RUs and Terminals
Testing of new solutions	Operational Bottlenecks	International Contingency Management (ICM)
	IT Tools	Identification and relieve of operational bottlenecks at border in cooperation with RUs
	Transport Market Study	Contribution to the development of international IT Tools and to the improvement of the related data quality
Studies 2019 - 2020	Capacity Study	Update of the Transport Market Study (TMS)
		Innovative Capacity Study

Success stories



International Contingency Management – displaying the Re-routing scenarios in the environment of CIP map

