



# TCR TOOL

Jan Deeleman  
RFC Rhine Alpine, RAG via Teams  
25.05.2020



Co-financed by the Connecting Europe  
Facility of the European Union



**ProRail**



**SBB CFF FFS**



**NETZE**

**INFRABEL**

# Agenda

- 1 Introduction in the topic
- 2 Introduction in the Tool
- 3 Practising / feed back

# Main goals of the TCR Tool

## For applicants

- Give a uniform overview of all works of all IMs within Europe
- Give details which have a high value for planning transports (like impact on capacity)

## For IMs

- To see what neighboring IMs planned and to take that in account in own planning
- To check how works with impact on the neighbors can be planned
- Coordination of planning works via the tool for the easy cases
- Preparation for the complex cases (see first bullet)
- To have a standard format with standard information

## For all

- To replace the Corridor Excel-overview

# Timeline of TCR Tool roll out



## May – November 2019

Pilot on RFC Rhine-Alpine to test basic functions for IMs

## December 2019 – December 2020

Further improvement and piloting among IMs of the tool

## March 2020

- Introduction of the TCR Tool for RUs on RFC Alpine
- Invitation for workshop with RU's end users for introduction in the system and to get feed-back

## December 2020

- Tool ready for roll out all at all IMs
- To be decided: On RFC Rhine-Alpine the TCR Tool replaces the current Excel-overview

# Agenda

- 1 Introduction in the topic
- 2 Introduction in the Tool**
- 3 Practising / feed back

# Access and possibilities



## For applicants

- Access via 3 free accounts
- List overview with filter functions
- Map overview with filter functions
- Report functions

## TCR Overview

Id	IM reference ID	Created at	Status	Reason for restriction	Location from	Location to	Affected IM
2019-03257	0085-8510015	16-12-2019 09:55					scio U (CH-15648)
2020-00566	0083-831219_16	13-01-2020 09:44					1503)
2020-00537	0083-831219_7	10-01-2020 10:58					8)
2020-00561	0083-831219_4	13-01-2020 09:44					ZA PRINCIPE (IT-4700)
2020-00563	0083-831219_6	13-01-2020 09:44					TTIMA (IT-4610)
2020-00565	0083-831219_9	13-01-2020 09:44					LA (IT-1003) Swiss Federal Railways - Infrastructure
2020-00560	0083-831219_3	13-01-2020 09:44					/IA (IT-4331)
2020-00548	0083-831219_28	10-01-2020 10:58					RATE (IT-1701)
2020-00540	0083-831219_12	10-01-2020 10:58					1)
2020-00562	0083-831219_5	13-01-2020 09:44					NOLE (IT-4702)
2019-03258	0085-8510016	16-12-2019 09:55					
2020-00575	0083-831219_30	13-01-2020 09:44					-239) Swiss Federal Railways - Infrastructure
2020-00570	0083-831219_21	13-01-2020 09:44					PC SEVESO (IT-1049)
2020-00394	0084-IO-R-3AE009-2018-00	08-01-2020 13:48					sthaven (NL-64)
2020-00239	0084-IO-K-B17018-wo06-00	08-01-2020 13:47					d (NL-584)
2020-00212	0084-IO-K-B17018-22m2-00	08-01-2020 13:47	Publication	Miscellaneous	Maasvlakte Prinses Amaliahaven (NL-1231)	Maasvlakte Yangtzehaven Noord (NL-99969)	
2020-00214	0084-IO-K-B17018-22th-00	08-01-2020 13:47	Publication	Miscellaneous	Botlek (NL-546)	Botlek Theemsweg aansl. (NL-1086)	
2020-00213	0084-IO-K-B17018-22m3-00	08-01-2020 13:47	Publication	Miscellaneous	Maasvlakte Prinses Amaliahaven (NL-1231)	Maasvlakte West terminal Noord (NL-1361)	

## Search for TCRs

Time



D

W

M

Q

Y

&lt;

&gt;

From:

22-05-2020



00:00



To:

20-11-2020



00:00



Type:



IM:



RFC:



Sections:



+

x

Reason for restriction:



Visibility:



only TCRs within my IM



only TCRs my IM is affected

Location:

From:



To:



Temporal Expansion:



all



known exact time

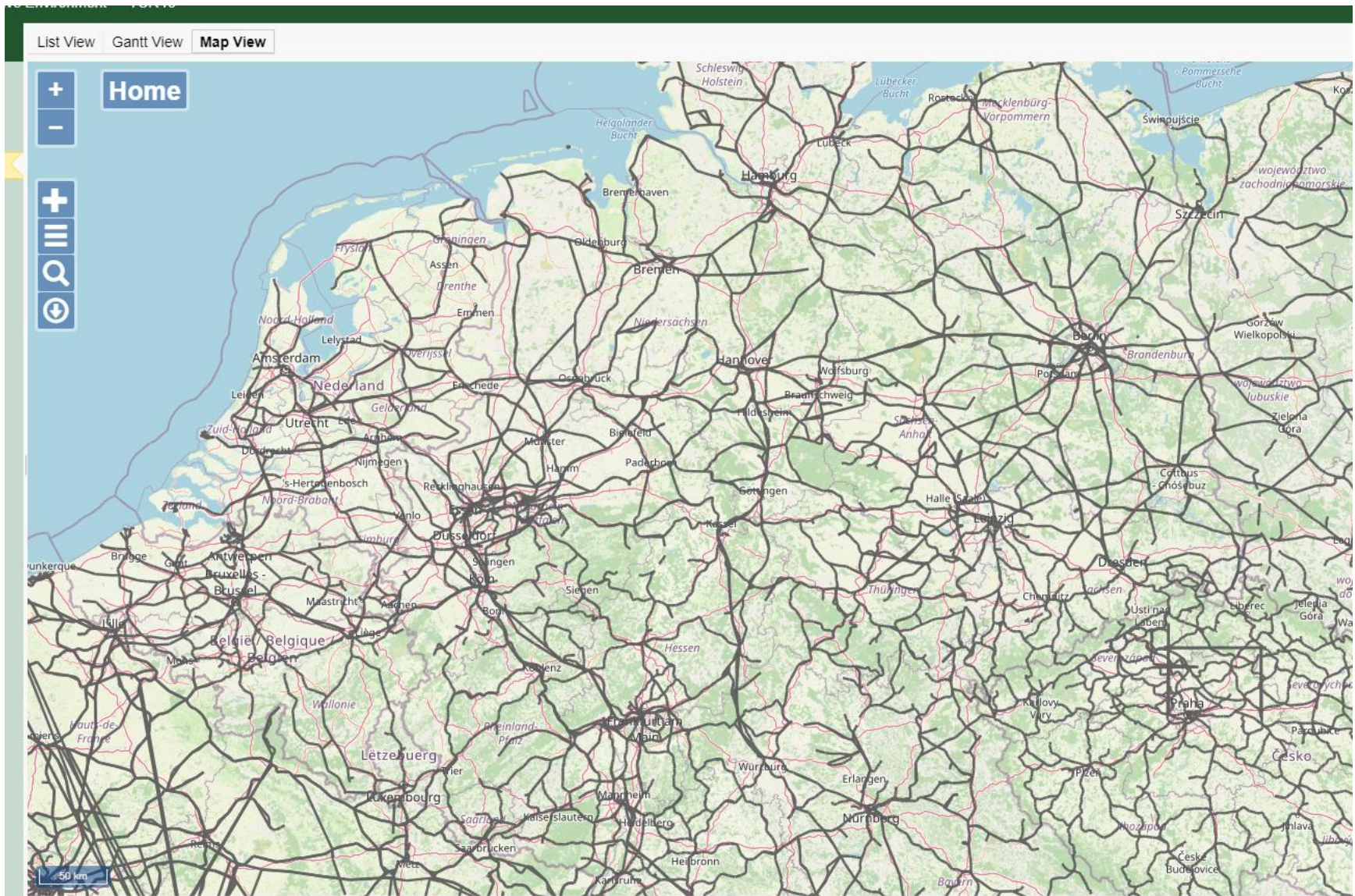


unknown exact time

Apply Search

Cancel







List View

Gantt View

Map View

+

Search

×

Search for TCR using the IM reference ID:

Search

Date from:

dd-mm-yyyy

Date to:

dd-mm-yyyy

Status:

Status

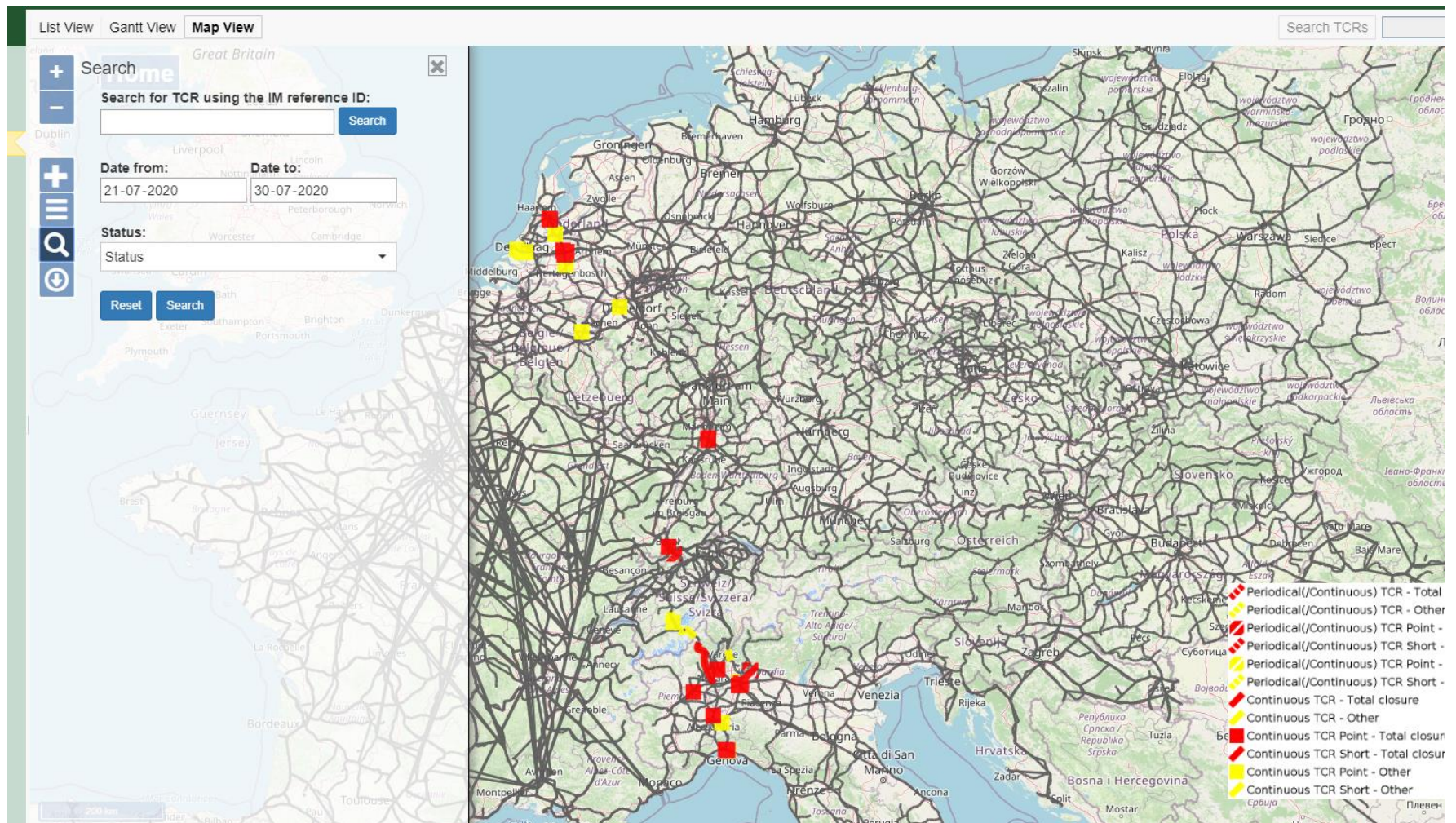
▼

Reset

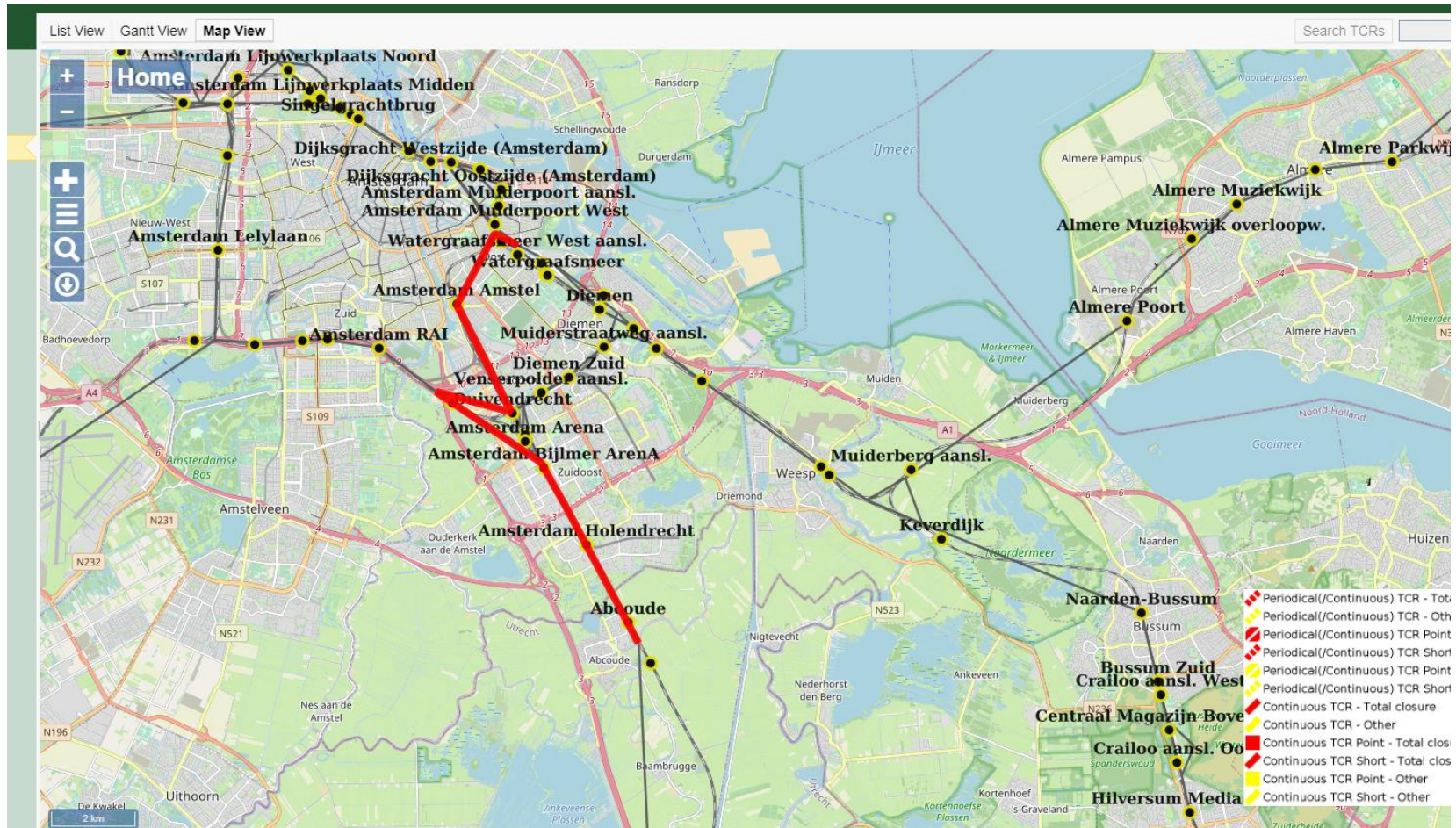
Search

The interface displays a map of Central Europe, including Germany, France, Switzerland, and Austria. Major cities like Paris, Berlin, Zurich, and Vienna are visible. The map is overlaid with a network of black lines representing TCRs (Transit Corridors). The left sidebar contains search filters: a search bar for IM reference IDs, date range selectors (dd-mm-yyyy), a status dropdown menu, and 'Reset' and 'Search' buttons. The top navigation bar shows 'List View', 'Gantt View', and 'Map View' tabs, with 'Map View' being the active selection.

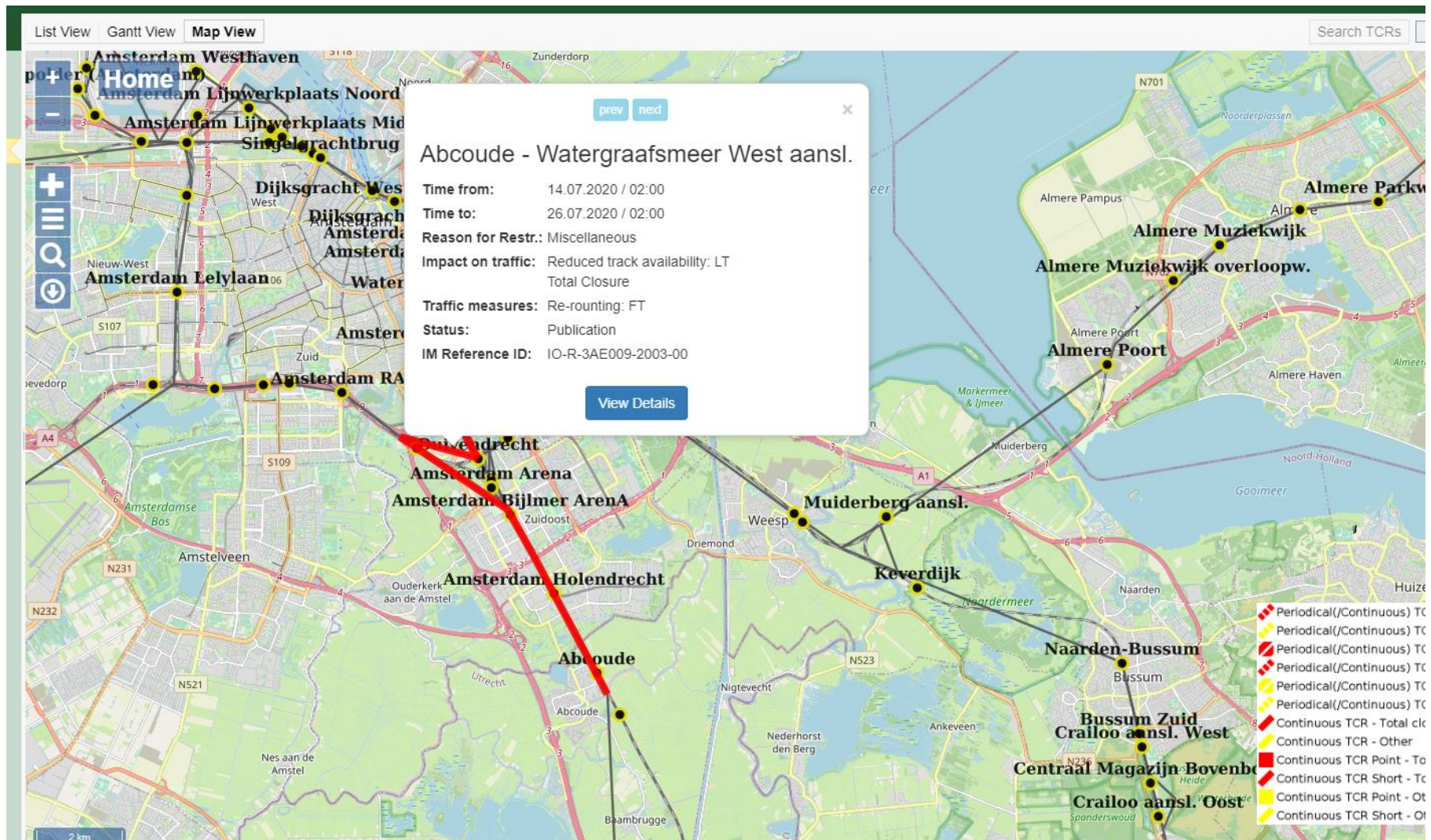












List View
Gantt View
**Map View**
Search TCRs

@enterprise - Process 2020-00391 - Google Chrome

Niet beveiligd | tcr-online.rne.eu/tcr/servlet/method/com.groiss.smartclient.wl.WorklistActions.showProcessDetails?pi=com.dec.aww.core.StepInstance...

## 2020-00391 0084-IO-R-3AE009-2003-00

TCR details
Documents
Notes
History
Process

### TCR Details

**Main Data**

<b>IM reference ID</b>	0084 - IO-R-3AE009-2003-00
IM project ID	R-3AE009
Reason for restriction	Miscellaneous ▼
Description	Diverse werkzaamheden PHS Amsterdam Muiderpoort.

**Spatial expansion of TCR**

Location from	Abcoude (NL-47) ▼ 🌐
Location to	Watergraafsmeer West aansl. (NL-1349) ▼
Section	Amsterdam Westhaven-Emmerich Grenze [CIS, RFC1] ▲ Amsterdam Muiderpoort West-Duivendrecht RFC1 Amsterdam Muiderpoort West-Duivendrecht RFC2 ▼
Direction	⊙ <> ◀ ▶
Affected border	
Affected IM	
Involved RFC	RFC1 RFC2

**Process**

Name: TCR

Started: 08-01-2020 13:48

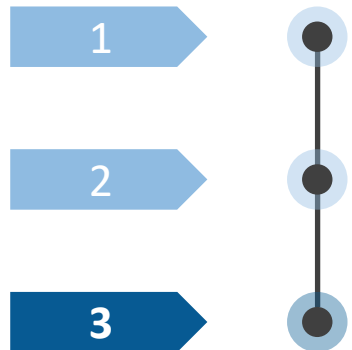
Started by: Jan Deeleman (Admin)

Finished: 08-01-2020 13:52

Close



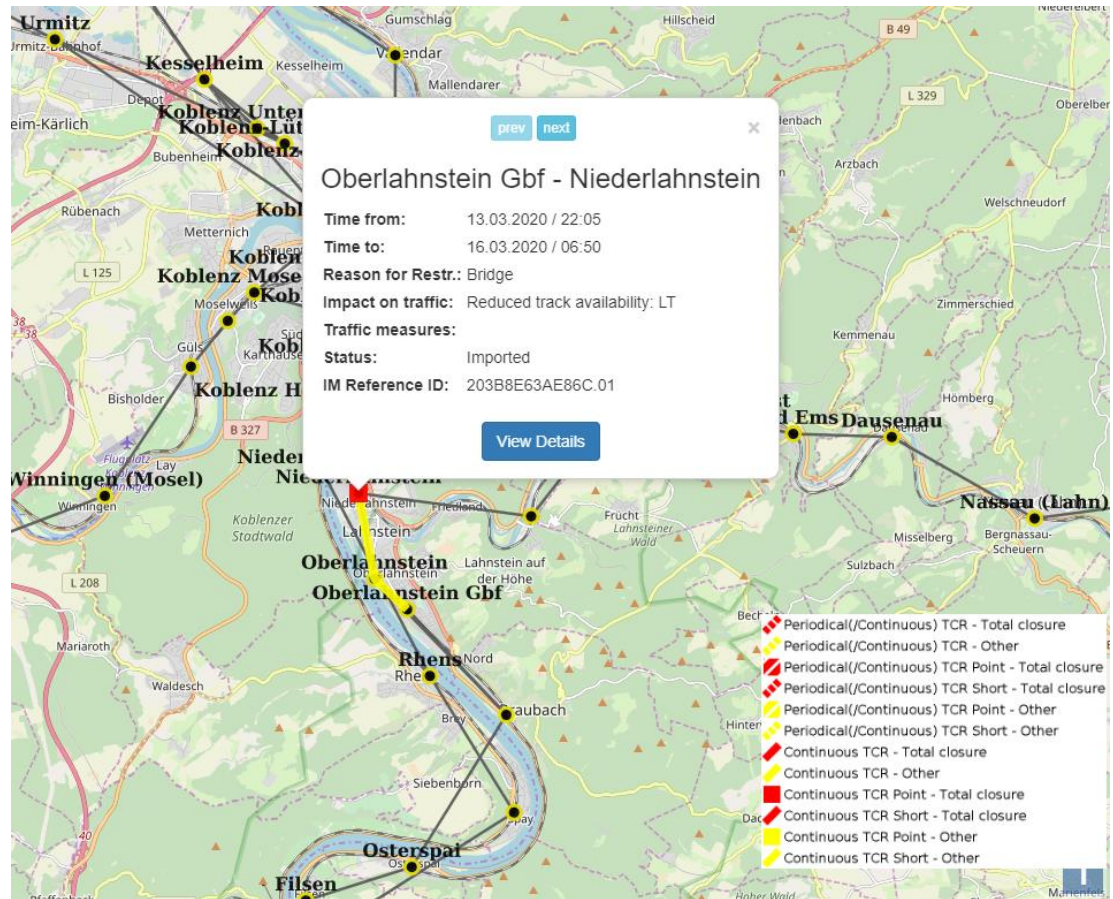
# Agenda

- 
- 1 Introduction in the topic
  - 2 Introduction in the Tool
  - 3 Practising / feed back**

Productional environment:

<https://tcr-online.rne.eu/>

- Accounts available on request at the Corridor:  
[robin.garip@deutschebahn.com](mailto:robin.garip@deutschebahn.com)



**ProRail**

**INFRABEL**

**DB NETZE**

**SBB CFF FFS**

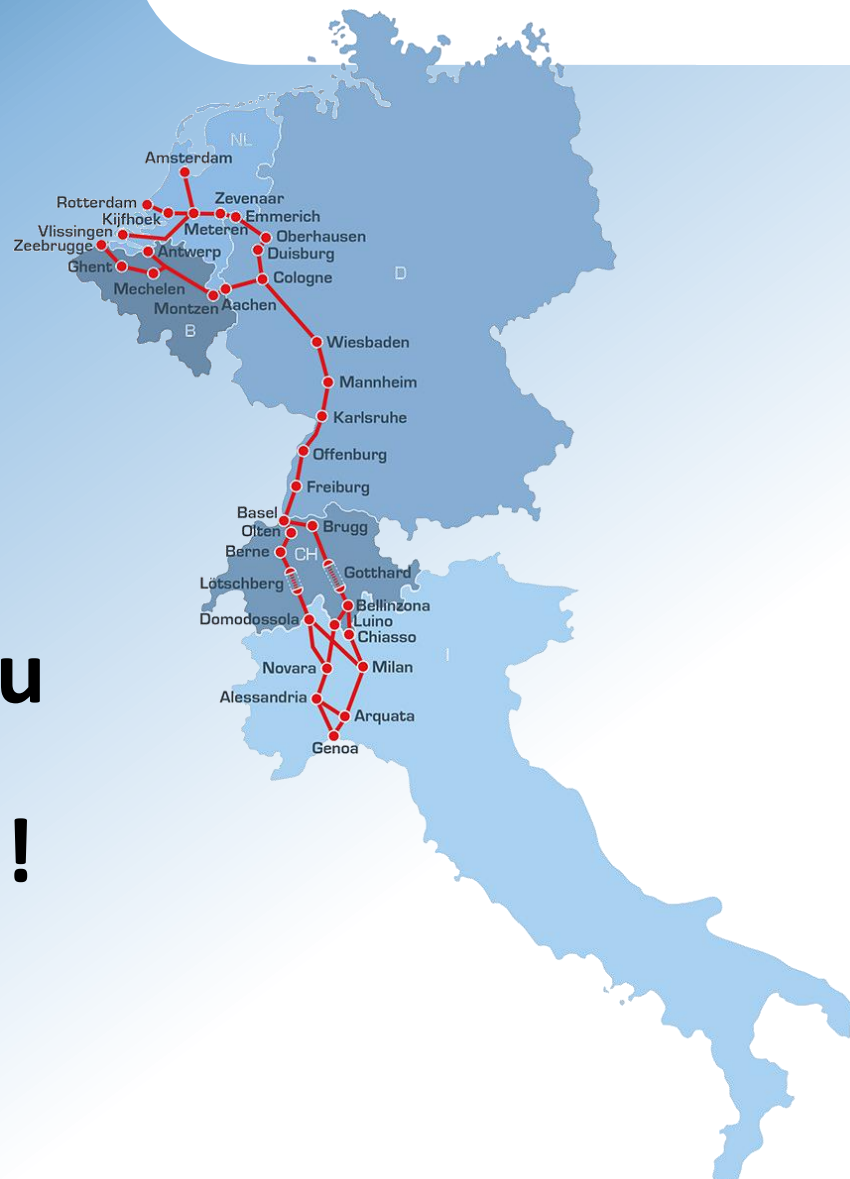
**bls**



**RFI**  
RETE FERROVIARIA ITALIANA  
GRUPPO FERROVIE DELLO STATO

 Co-financed by the Connecting Europe  
Facility of the European Union

**CORRIDOR**  
RHINE < > ALPINE



**Thank you  
for your  
attention!**