



## Rail Freight Corridor Punctuality Development Report

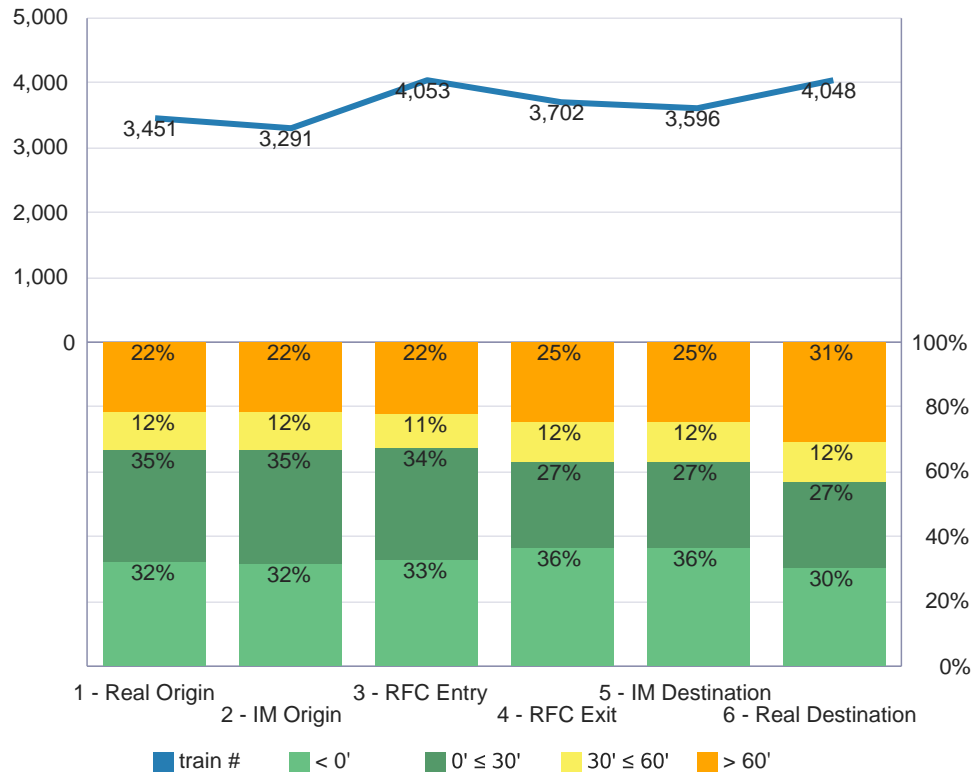
### Parameters:

Time period:	2020-02
Train type:	Freight
Train number from:	
Train number to:	
List of train numbers:	
Point list name:	RFC 1 Detailed TPM
List of points:	
List of IMs:	
List of RUs:	

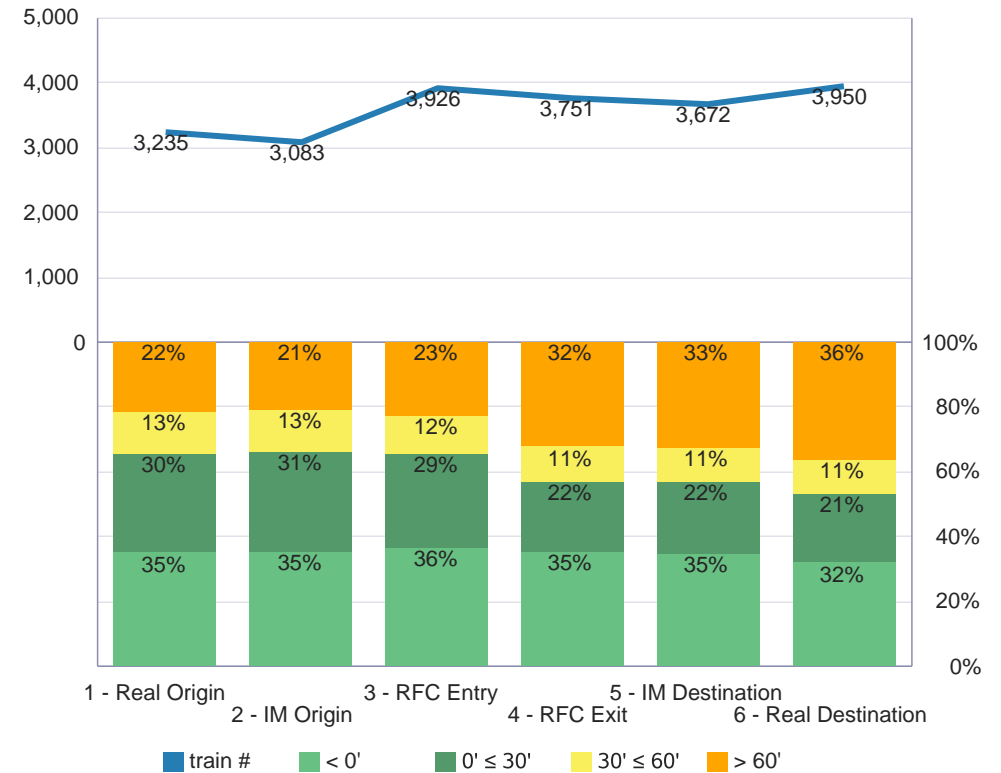
\*parameter will not be shown in table above if it is not chosen or entered (train from/to, list of train numbers) or if all possible options are chosen (list of points, list of IMs, list of RUs).

## Punctuality and number of trains

### North-South

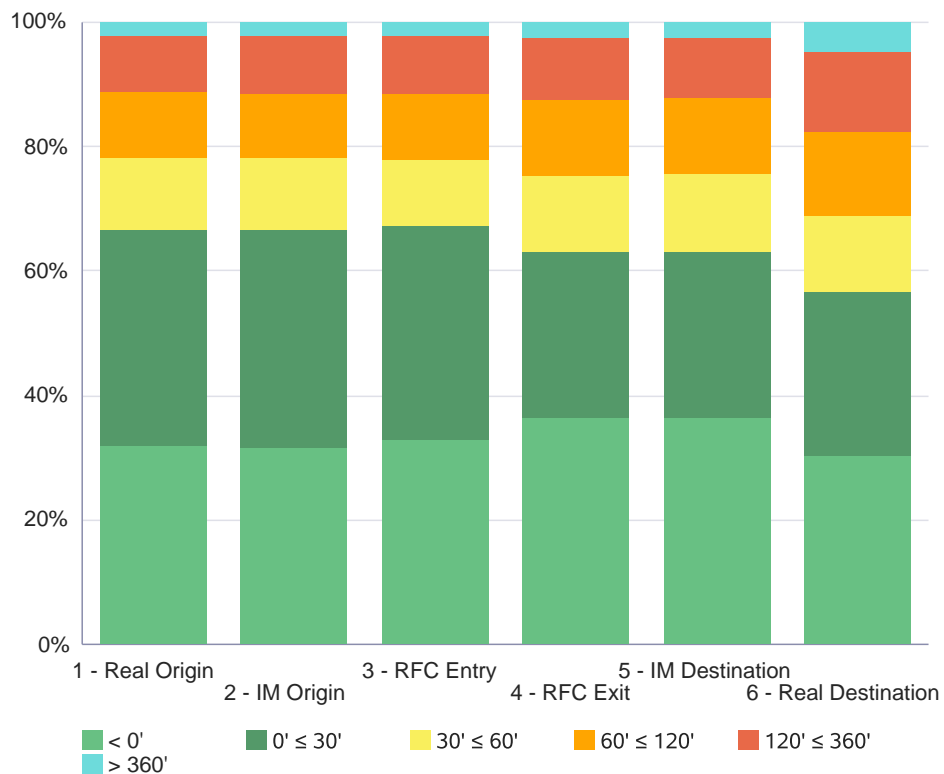


### South-North

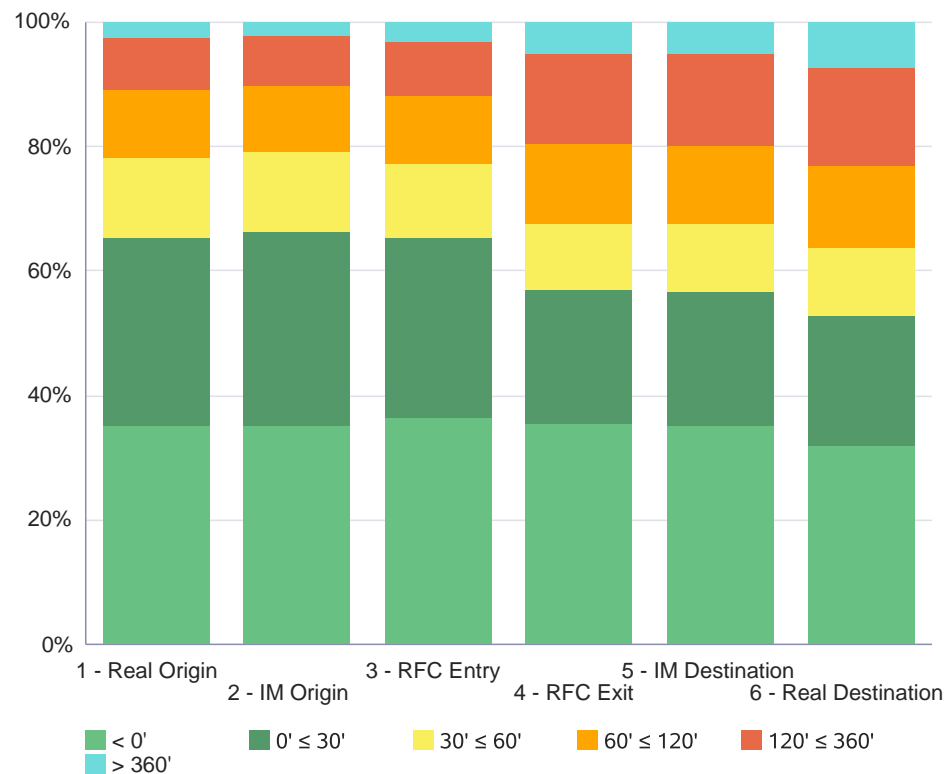


# Punctuality

## North-South

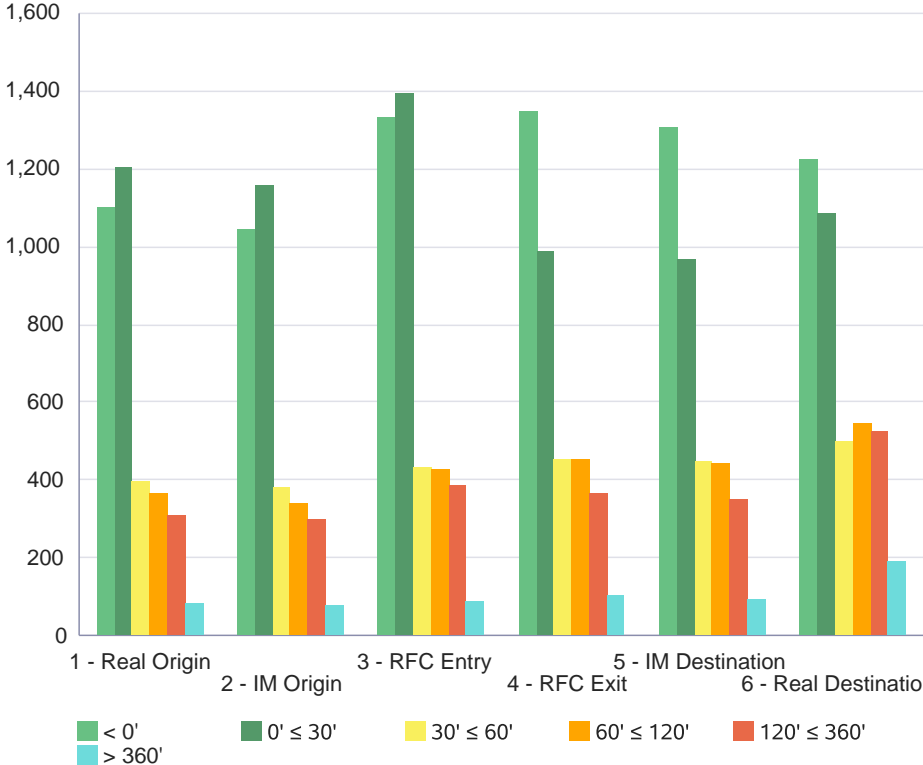


## South-North

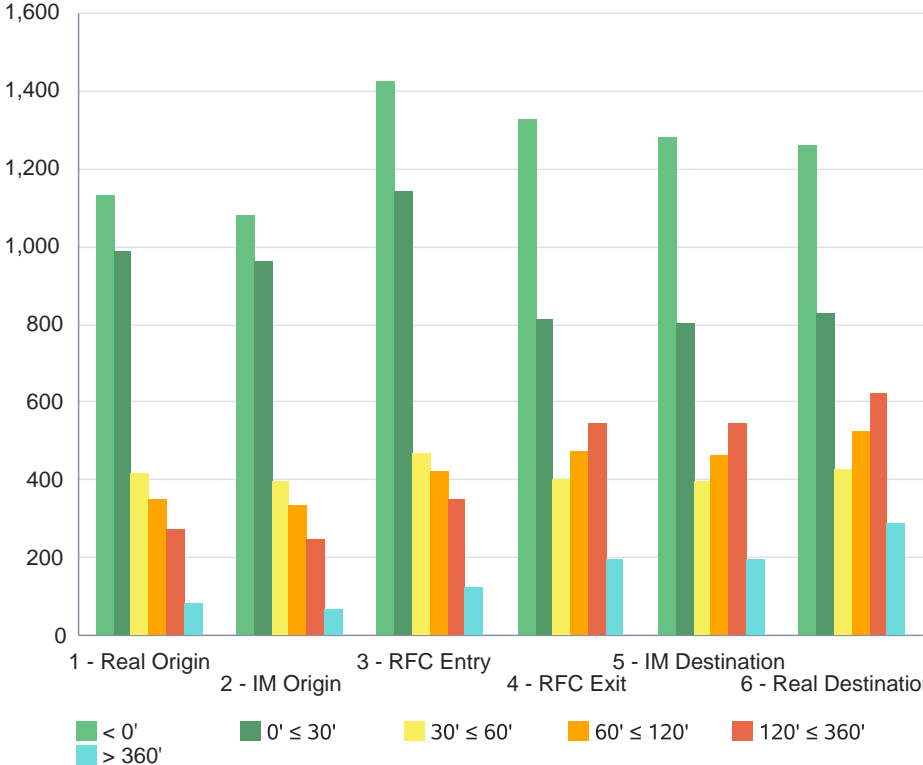


# Number of trains

### North-South

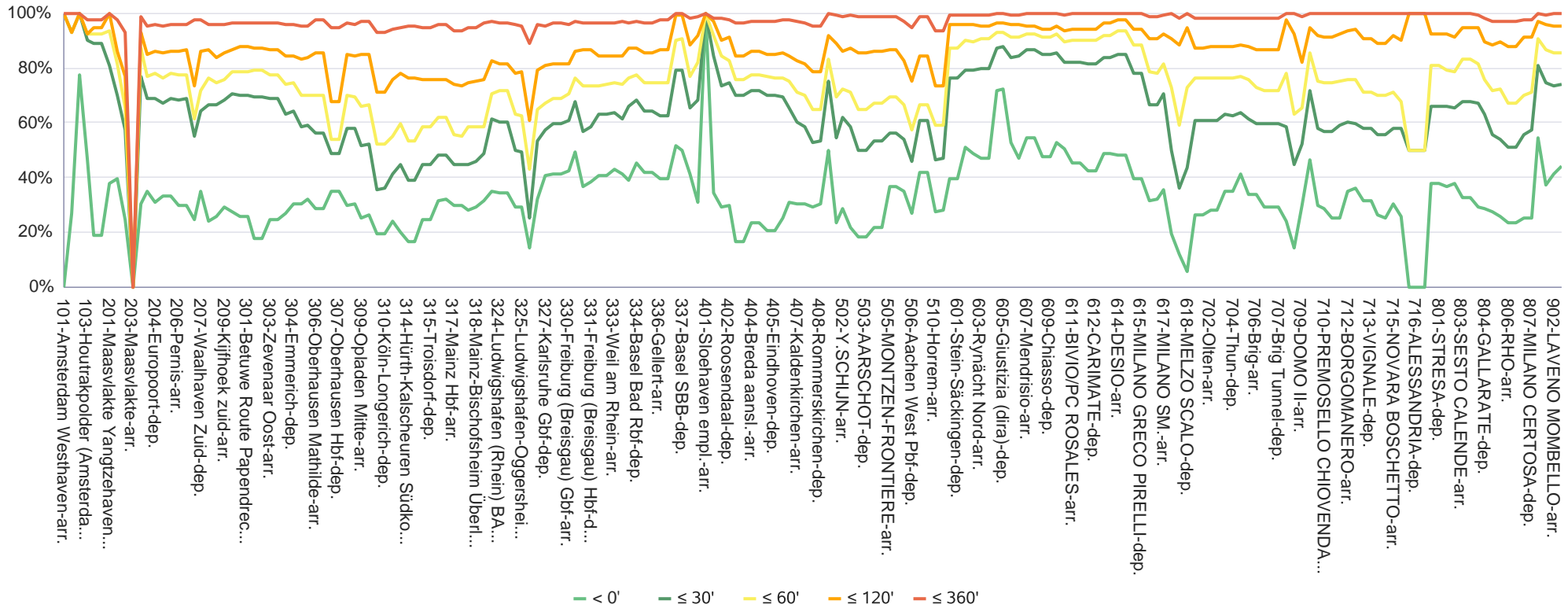


### South-North



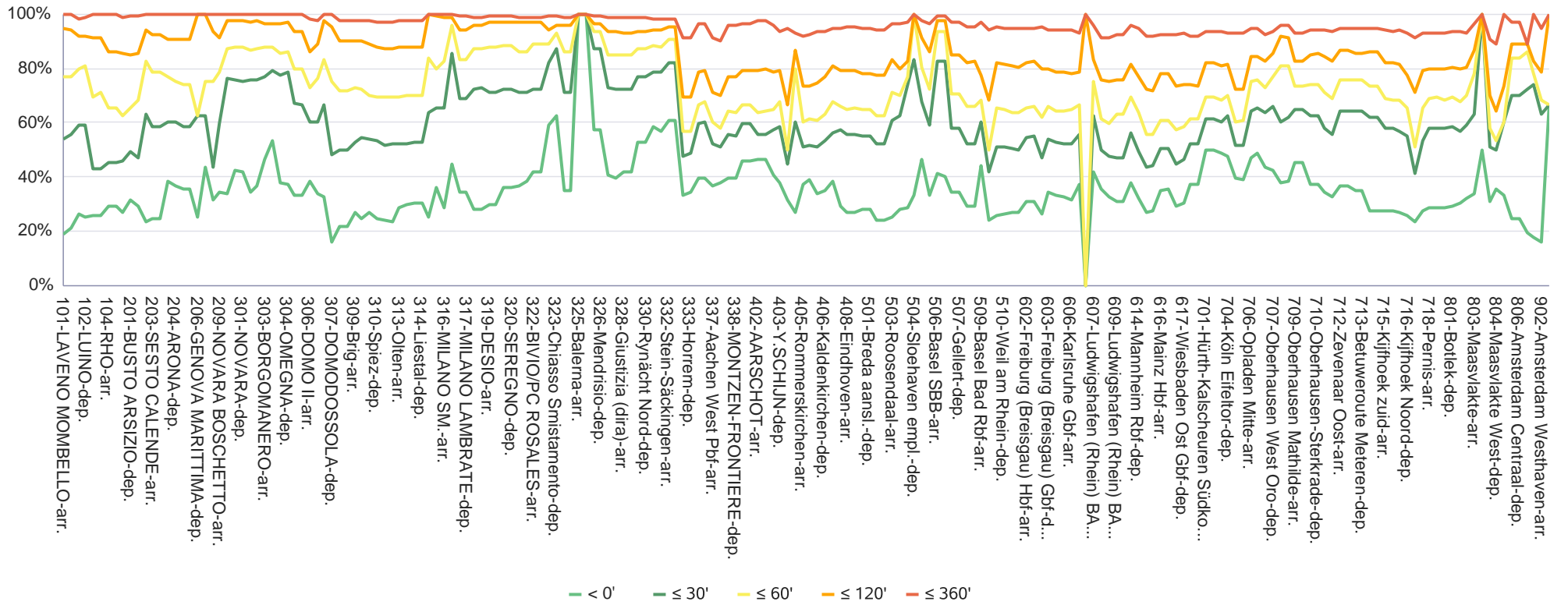
# Punctuality per location

## North-South



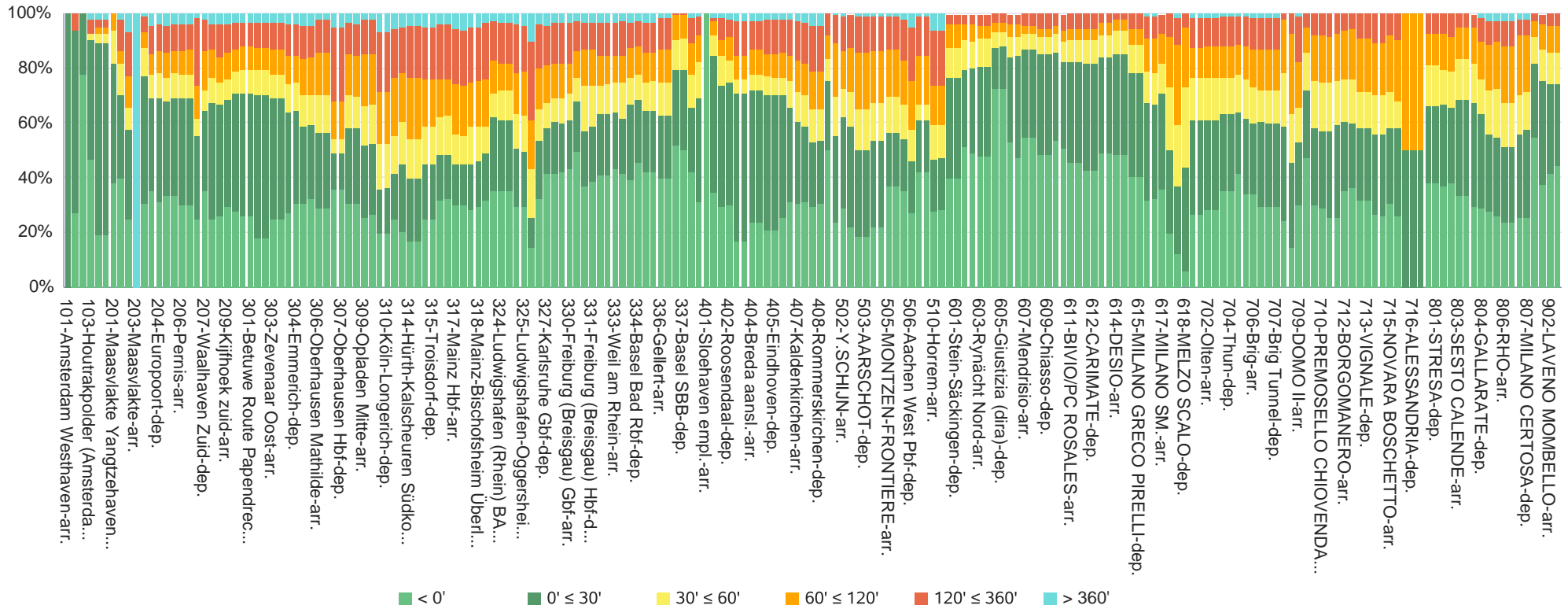
# Punctuality per location

## South-North



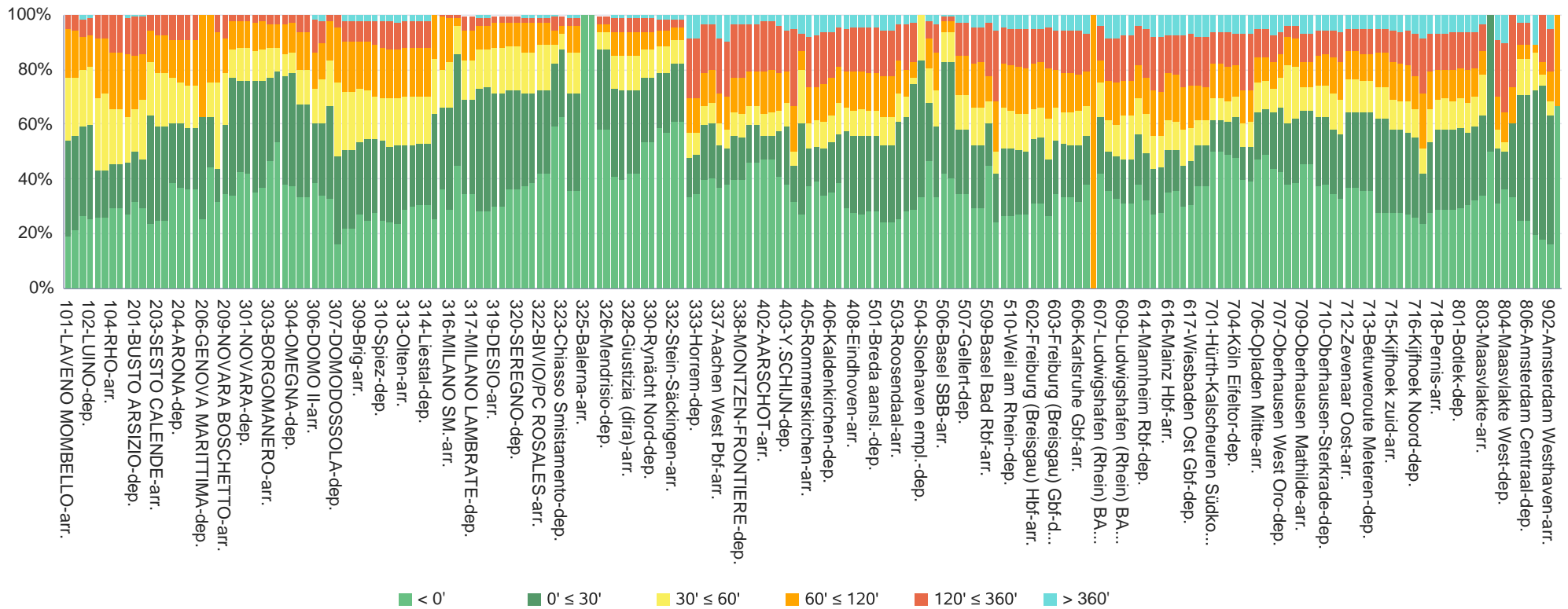
# Punctuality per location

## North-South



# Punctuality per location

## South-North





## Punctuality and number of trains

### North-South

Absolute values	# of train runs	< 0 min.	0 ≤ 5 min.	5 ≤ 15 min.	15 ≤ 30 min.	30 ≤ 60 min.	60 ≤ 120 min.	120 ≤ 240 min.	240 ≤ 360 min.	360 ≤ 720 min.	> 720 min.
1 - Real Origin	3,451	32.0%	20.0%	8.0%	7.0%	12.0%	11.0%	7.0%	2.0%	2.0%	0.0%
2 - IM Origin	3,291	31.6%	20.5%	7.4%	7.1%	11.5%	10.4%	6.9%	2.1%	1.9%	0.5%
3 - RFC Entry	4,053	32.8%	19.0%	7.4%	7.8%	10.6%	10.5%	7.4%	2.2%	1.7%	0.5%
4 - RFC Exit	3,702	36.0%	9.0%	9.0%	9.0%	12.0%	12.0%	7.0%	2.0%	2.0%	1.0%
5 - IM Destination	3,596	36.2%	8.6%	8.8%	9.4%	12.4%	12.2%	7.4%	2.3%	1.9%	0.7%
6 - Real Destination	4,048	30.1%	8.8%	8.9%	9.1%	12.3%	13.4%	9.5%	3.4%	3.5%	1.3%

### South-North

Absolute values	# of train runs	< 0 min.	0 ≤ 5 min.	5 ≤ 15 min.	15 ≤ 30 min.	30 ≤ 60 min.	60 ≤ 120 min.	120 ≤ 240 min.	240 ≤ 360 min.	360 ≤ 720 min.	> 720 min.
1 - Real Origin	3,235	35.0%	12.0%	10.0%	9.0%	13.0%	11.0%	6.0%	2.0%	2.0%	1.0%
2 - IM Origin	3,083	35.0%	12.2%	10.2%	8.9%	12.8%	10.8%	5.9%	2.1%	1.8%	0.4%
3 - RFC Entry	3,926	36.2%	10.9%	9.7%	8.5%	12.0%	10.8%	6.6%	2.4%	2.4%	0.7%
4 - RFC Exit	3,751	35.0%	8.0%	7.0%	7.0%	11.0%	13.0%	10.0%	5.0%	4.0%	1.0%
5 - IM Destination	3,672	34.9%	8.1%	6.7%	6.9%	10.8%	12.6%	10.1%	4.7%	3.9%	1.4%
6 - Real Destination	3,950	31.8%	7.7%	6.5%	6.8%	10.8%	13.3%	10.8%	5.0%	5.0%	2.3%

## Punctuality and number of trains - accumulated values

### North-South

Cumulative values	# of train runs	< 0 min.	≤ 5 min.	≤ 15 min.	≤ 30 min.	≤ 60 min.	≤ 120 min.	≤ 240 min.	≤ 360 min.	≤ 720 min.
1 - Real Origin	3,451	32.0%	52.0%	59.0%	67.0%	78.0%	89.0%	95.0%	98.0%	100.0%
2 - IM Origin	3,291	31.6%	52.1%	59.5%	66.6%	78.2%	88.5%	95.4%	97.6%	99.5%
3 - RFC Entry	4,053	32.8%	51.9%	59.3%	67.1%	77.7%	88.3%	95.6%	97.8%	99.5%
4 - RFC Exit	3,702	36.0%	45.0%	54.0%	63.0%	75.0%	87.0%	95.0%	97.0%	99.0%
5 - IM Destination	3,596	36.2%	44.8%	53.6%	63.0%	75.4%	87.7%	95.1%	97.4%	99.3%
6 - Real Destination	4,048	30.1%	38.8%	47.6%	56.6%	68.9%	82.3%	91.8%	95.2%	98.7%

### South-North

Cumulative values	# of train runs	< 0 min.	≤ 5 min.	≤ 15 min.	≤ 30 min.	≤ 60 min.	≤ 120 min.	≤ 240 min.	≤ 360 min.	≤ 720 min.
1 - Real Origin	3,235	35.0%	47.0%	57.0%	65.0%	78.0%	89.0%	95.0%	97.0%	99.0%
2 - IM Origin	3,083	35.0%	47.2%	57.4%	66.2%	79.0%	89.8%	95.7%	97.8%	99.6%
3 - RFC Entry	3,926	36.2%	47.0%	56.7%	65.2%	77.2%	88.0%	94.5%	96.9%	99.3%
4 - RFC Exit	3,751	35.0%	43.0%	50.0%	57.0%	68.0%	80.0%	90.0%	95.0%	99.0%
5 - IM Destination	3,672	34.9%	43.0%	49.7%	56.6%	67.4%	79.9%	90.0%	94.7%	98.6%
6 - Real Destination	3,950	31.8%	39.6%	46.0%	52.8%	63.6%	76.9%	87.8%	92.7%	97.7%

## Punctuality and number of trains per location

### North-South

Order	Name	Status	# of train runs	< 0 min.	≤ 5 min.	≤ 15 min.	≤ 30 min.	≤ 60 min.	≤ 120 min.	≤ 240 min.	≤ 360 min.	≤ 720 min.
101	Amsterdam Westhaven	arr.	1	0.0%	100.0%	100.0%	100.0%	100.0%	100.0%	100.0%	100.0%	100.0%
101	Amsterdam Westhaven	dep.	15	26.7%	73.3%	93.3%	93.3%	93.3%	93.3%	93.3%	100.0%	100.0%
102	Beverwijk Hoogovens Centraal	dep.	22	77.3%	86.4%	100.0%	100.0%	100.0%	100.0%	100.0%	100.0%	100.0%
103	Houtrakpolder (Amsterdam)	dep.	41	46.3%	85.4%	87.8%	90.2%	92.7%	92.7%	92.7%	97.6%	97.6%
104	Amsterdam Centraal	arr.	81	18.5%	82.7%	87.6%	88.9%	92.6%	95.1%	95.1%	97.5%	98.8%
104	Amsterdam Centraal	dep.	81	18.5%	82.7%	87.6%	88.9%	92.6%	95.1%	95.1%	97.5%	98.8%
201	Maasvlakte Yangtzehaven Noord	dep.	16	37.5%	68.8%	81.2%	81.2%	93.8%	100.0%	100.0%	100.0%	100.0%
202	Maasvlakte West	arr.	43	39.5%	51.2%	65.1%	69.8%	81.4%	86.0%	97.7%	97.7%	100.0%
202	Maasvlakte West	dep.	200	24.5%	52.0%	55.0%	57.5%	65.5%	77.0%	90.0%	93.0%	97.5%
203	Maasvlakte	arr.	2	0.0%	0.0%	0.0%	0.0%	0.0%	0.0%	0.0%	0.0%	100.0%
203	Maasvlakte	dep.	279	30.5%	69.2%	72.8%	76.7%	87.5%	93.2%	97.5%	98.6%	99.6%
204	Europoort	arr.	549	34.8%	60.3%	65.2%	68.7%	77.2%	85.2%	93.8%	95.6%	99.1%
204	Europoort	dep.	599	30.9%	59.9%	65.4%	68.8%	78.0%	86.3%	94.2%	96.0%	99.2%
205	Botlek	arr.	616	33.1%	55.8%	62.7%	67.4%	76.5%	85.4%	93.7%	95.6%	99.0%
205	Botlek	dep.	654	33.0%	58.0%	65.1%	68.8%	78.0%	85.9%	93.9%	95.9%	99.2%
206	Pernis	arr.	677	29.7%	56.6%	64.7%	68.5%	77.4%	86.4%	93.9%	95.7%	99.1%
206	Pernis	dep.	700	29.7%	57.1%	65.0%	68.7%	77.7%	87.0%	94.1%	95.9%	99.1%
207	Waalhaven Zuid	arr.	49	24.5%	36.7%	51.0%	55.1%	61.2%	73.5%	87.8%	98.0%	100.0%
207	Waalhaven Zuid	dep.	201	34.8%	58.7%	60.7%	64.2%	71.6%	86.1%	92.5%	97.5%	100.0%
208	Kijfhoek Noord	arr.	863	24.2%	50.3%	62.6%	66.9%	76.1%	86.7%	93.5%	95.9%	99.2%
208	Kijfhoek Noord	dep.	974	25.6%	56.8%	62.7%	66.3%	74.6%	83.7%	92.7%	96.2%	99.3%
209	Kijfhoek zuid	arr.	968	29.2%	57.6%	64.4%	68.4%	76.0%	85.3%	93.3%	96.2%	99.1%
209	Kijfhoek zuid	dep.	1,134	27.5%	60.4%	66.9%	70.6%	78.5%	87.0%	94.2%	96.7%	99.2%
301	Betuwe Route Papendrecht	arr.	831	25.9%	55.4%	65.2%	70.3%	78.9%	87.7%	94.2%	96.6%	99.4%
301	Betuwe Route Papendrecht	dep.	831	25.9%	55.4%	65.2%	70.3%	78.9%	87.7%	94.2%	96.6%	99.4%

Order	Name	Status	# of train runs	< 0 min.	≤ 5 min.	≤ 15 min.	≤ 30 min.	≤ 60 min.	≤ 120 min.	≤ 240 min.	≤ 360 min.	≤ 720 min.
302	Betuweroute Meteren	arr.	908	17.7%	48.2%	64.2%	69.7%	79.1%	87.6%	94.3%	96.7%	99.2%
302	Betuweroute Meteren	dep.	908	17.8%	48.6%	64.3%	69.7%	79.1%	87.6%	94.3%	96.7%	99.2%
303	Zevenaar Oost	arr.	915	24.3%	46.6%	60.4%	68.6%	77.7%	86.7%	94.0%	96.4%	99.3%
303	Zevenaar Oost	dep.	915	24.3%	46.6%	60.4%	68.6%	77.7%	86.7%	94.0%	96.4%	99.3%
304	Emmerich	arr.	821	26.6%	43.2%	55.4%	63.3%	74.3%	84.6%	93.7%	96.1%	99.3%
304	Emmerich	dep.	777	30.2%	45.8%	55.9%	64.4%	74.4%	84.7%	93.6%	96.1%	99.1%
305	Oberhausen-Sterkrade	arr.	840	30.5%	41.0%	49.0%	58.6%	69.8%	83.2%	93.0%	95.6%	98.9%
305	Oberhausen-Sterkrade	dep.	841	31.8%	41.6%	49.8%	59.2%	70.2%	83.6%	92.9%	95.5%	98.8%
306	Oberhausen Mathilde	arr.	470	28.3%	34.0%	44.7%	56.2%	69.8%	85.3%	95.7%	97.4%	99.2%
306	Oberhausen Mathilde	dep.	470	28.7%	34.3%	45.3%	56.4%	69.8%	85.3%	95.7%	97.4%	99.2%
307	Oberhausen Hbf	arr.	37	35.1%	37.8%	43.2%	48.6%	54.0%	67.6%	83.8%	94.6%	100.0%
307	Oberhausen Hbf	dep.	37	35.1%	37.8%	43.2%	48.6%	54.0%	67.6%	83.8%	94.6%	100.0%
308	Oberhausen West Oro	arr.	694	30.0%	37.3%	45.7%	57.9%	69.9%	84.7%	94.1%	96.4%	99.0%
308	Oberhausen West Oro	dep.	706	30.3%	37.5%	45.8%	57.8%	69.6%	84.4%	93.9%	96.2%	99.0%
309	Opladen Mitte	arr.	496	24.8%	31.6%	40.7%	51.4%	65.9%	84.9%	95.4%	97.4%	98.6%
309	Opladen Mitte	dep.	494	26.1%	32.8%	41.9%	52.0%	66.4%	85.0%	95.3%	97.4%	98.6%
310	Köln-Longerich	arr.	173	19.1%	22.0%	24.9%	35.3%	52.0%	71.1%	86.1%	93.1%	97.7%
310	Köln-Longerich	dep.	173	19.1%	22.0%	26.0%	35.8%	52.0%	71.1%	86.1%	93.1%	97.7%
311	Köln Eifeltr	arr.	380	24.2%	28.4%	33.4%	41.3%	55.3%	76.0%	89.0%	94.0%	98.2%
311	Köln Eifeltr	dep.	489	20.0%	25.4%	33.5%	44.8%	59.9%	78.3%	90.4%	94.7%	98.2%
314	Hürth-Kalscheuren Südkopf	arr.	347	16.4%	21.9%	29.4%	39.2%	53.6%	76.1%	89.9%	95.1%	98.6%
314	Hürth-Kalscheuren Südkopf	dep.	347	16.4%	21.9%	29.4%	39.2%	53.6%	76.1%	89.9%	95.1%	98.6%
315	Troisdorf	arr.	1,209	24.5%	29.7%	36.4%	44.7%	58.3%	75.7%	89.7%	94.9%	99.0%
315	Troisdorf	dep.	1,210	24.6%	29.8%	36.6%	44.8%	58.4%	75.7%	89.7%	94.9%	99.0%
316	Wiesbaden Ost Gbf	arr.	823	31.4%	34.1%	40.6%	47.9%	61.8%	75.8%	90.3%	96.0%	99.4%
316	Wiesbaden Ost Gbf	dep.	813	31.9%	34.9%	41.2%	48.3%	62.2%	75.6%	90.4%	95.9%	99.4%
317	Mainz Hbf	arr.	329	29.8%	32.8%	35.6%	44.7%	55.6%	74.2%	87.2%	93.9%	98.8%
317	Mainz Hbf	dep.	326	29.8%	32.8%	35.6%	44.5%	55.2%	73.6%	86.8%	93.6%	98.5%
318	Mainz-Bischofsheim Überltg II	arr.	1,057	27.7%	32.1%	37.3%	44.8%	58.5%	74.6%	89.5%	95.0%	99.0%

Order	Name	Status	# of train runs	< 0 min.	≤ 5 min.	≤ 15 min.	≤ 30 min.	≤ 60 min.	≤ 120 min.	≤ 240 min.	≤ 360 min.	≤ 720 min.
318	Mainz-Bischofsheim Übertg II	dep.	1,064	29.0%	33.6%	38.4%	45.8%	58.6%	75.1%	89.5%	95.0%	99.2%
319	Mannheim Rbf	arr.	285	31.6%	36.8%	43.2%	48.8%	58.6%	75.8%	93.3%	96.5%	99.3%
319	Mannheim Rbf	dep.	438	34.9%	42.5%	54.6%	61.6%	70.8%	82.9%	95.4%	97.3%	99.5%
324	Ludwigshafen (Rhein) BASF Werksgrrenze	arr.	162	34.6%	39.5%	48.2%	60.5%	71.6%	81.5%	92.0%	96.3%	98.8%
324	Ludwigshafen (Rhein) BASF Werksgrrenze	dep.	162	34.6%	39.5%	48.2%	60.5%	71.6%	81.5%	92.0%	96.3%	98.8%
325	Ludwigshafen-Oggersheim	arr.	493	29.0%	33.1%	40.8%	50.1%	63.3%	77.9%	88.6%	95.7%	99.2%
325	Ludwigshafen-Oggersheim	dep.	490	29.2%	32.2%	39.6%	49.4%	62.6%	78.6%	89.8%	95.3%	99.0%
326	Ludwigshafen (Rhein) BASF Gbf	arr.	28	14.3%	17.9%	17.9%	25.0%	42.9%	60.7%	78.6%	89.3%	100.0%
327	Karlsruhe Gbf	arr.	1,405	32.0%	38.2%	44.8%	53.2%	65.0%	79.5%	91.6%	95.9%	99.2%
327	Karlsruhe Gbf	dep.	1,454	40.8%	45.5%	51.6%	57.6%	67.3%	80.8%	91.8%	95.5%	98.8%
328	Offenburg	arr.	1,232	41.1%	46.8%	52.9%	59.9%	69.1%	81.7%	92.5%	96.4%	99.1%
328	Offenburg	dep.	1,238	41.4%	46.8%	52.9%	59.6%	69.1%	81.7%	92.5%	96.3%	99.1%
330	Freiburg (Breisgau) Gbf	arr.	1,350	42.6%	48.6%	54.5%	60.7%	70.6%	81.8%	92.2%	96.2%	98.9%
330	Freiburg (Breisgau) Gbf	dep.	1,512	49.2%	54.9%	61.0%	67.5%	76.3%	86.1%	93.8%	97.0%	99.0%
331	Freiburg (Breisgau) Hbf	arr.	60	36.7%	43.3%	48.3%	56.7%	73.3%	86.7%	93.3%	96.7%	100.0%
331	Freiburg (Breisgau) Hbf	dep.	60	38.3%	45.0%	50.0%	58.3%	73.3%	86.7%	93.3%	96.7%	100.0%
332	Haltingen	arr.	1,666	40.8%	47.1%	54.3%	62.9%	73.6%	84.3%	93.3%	96.4%	98.7%
332	Haltingen	dep.	1,674	40.8%	47.1%	54.4%	63.0%	73.8%	84.4%	93.4%	96.4%	98.8%
333	Weil am Rhein	arr.	599	42.7%	47.9%	54.4%	63.8%	74.6%	84.6%	94.2%	96.7%	99.2%
333	Weil am Rhein	dep.	581	41.3%	44.9%	50.6%	61.3%	74.4%	84.2%	94.2%	96.9%	99.3%
334	Basel Bad Rbf	arr.	765	38.8%	47.1%	56.5%	66.3%	76.1%	87.2%	93.6%	96.7%	98.7%
334	Basel Bad Rbf	dep.	789	45.1%	50.3%	59.4%	68.1%	77.6%	87.6%	93.5%	96.8%	98.9%
335	Basel Bad Bf	arr.	1,565	41.5%	46.6%	54.1%	64.0%	74.7%	85.4%	93.4%	96.5%	98.7%
335	Basel Bad Bf	dep.	1,555	41.7%	46.7%	54.2%	64.4%	74.9%	85.6%	93.6%	96.5%	98.7%
336	Gellert	arr.	1,661	39.2%	44.7%	52.0%	62.7%	74.4%	86.6%	95.2%	98.0%	100.0%
336	Gellert	dep.	1,661	39.2%	44.7%	52.0%	62.7%	74.4%	86.6%	95.2%	98.0%	100.0%
337	Basel SBB	arr.	130	51.5%	65.4%	69.2%	79.2%	90.0%	99.2%	100.0%	100.0%	100.0%
337	Basel SBB	dep.	130	50.0%	65.4%	70.8%	79.2%	90.8%	99.2%	100.0%	100.0%	100.0%
338	Basel SBB RB Gr B	arr.	1,821	41.5%	47.4%	54.9%	65.2%	77.2%	88.7%	96.0%	98.2%	100.0%

Order	Name	Status	# of train runs	< 0 min.	≤ 5 min.	≤ 15 min.	≤ 30 min.	≤ 60 min.	≤ 120 min.	≤ 240 min.	≤ 360 min.	≤ 720 min.
338	Basel SBB RB Gr B	dep.	1,721	31.0%	46.4%	57.1%	68.5%	81.9%	91.8%	97.3%	98.9%	100.0%
401	Sloehaven empl.	arr.	1	100.0%	100.0%	100.0%	100.0%	100.0%	100.0%	100.0%	100.0%	100.0%
401	Sloehaven empl.	dep.	64	34.4%	78.1%	79.7%	84.4%	92.2%	96.9%	98.4%	98.4%	100.0%
402	Roosendaal	arr.	166	28.9%	57.8%	62.6%	73.5%	84.3%	90.4%	96.4%	98.2%	99.4%
402	Roosendaal	dep.	168	29.8%	60.1%	69.0%	74.4%	82.7%	91.1%	96.4%	97.6%	99.4%
403	Kijfhoek aansl. Zuid	arr.	313	16.3%	63.6%	68.7%	70.3%	76.0%	84.7%	93.9%	96.8%	99.4%
403	Kijfhoek aansl. Zuid	dep.	313	16.3%	63.6%	68.7%	70.3%	76.0%	84.7%	93.9%	96.8%	99.4%
404	Breda aansl.	arr.	479	23.6%	61.2%	69.3%	71.6%	77.2%	86.4%	94.6%	97.1%	99.4%
404	Breda aansl.	dep.	479	23.6%	61.2%	69.3%	71.6%	77.2%	86.4%	94.6%	97.1%	99.4%
405	Eindhoven	arr.	494	20.6%	57.1%	67.2%	70.0%	76.7%	85.0%	94.5%	97.4%	99.4%
405	Eindhoven	dep.	495	20.6%	57.0%	67.1%	69.9%	76.6%	84.8%	94.6%	97.4%	99.4%
406	Venlo	arr.	528	24.8%	50.6%	63.1%	69.7%	76.5%	85.6%	94.5%	97.7%	99.4%
406	Venlo	dep.	523	31.0%	42.4%	54.1%	65.6%	75.3%	84.5%	93.1%	97.5%	99.4%
407	Kaldenkirchen	arr.	490	30.2%	39.0%	49.8%	60.0%	71.4%	82.6%	93.1%	97.1%	99.2%
407	Kaldenkirchen	dep.	514	30.5%	38.7%	49.2%	58.6%	69.8%	81.3%	92.2%	96.3%	99.0%
408	Rommerskirchen	arr.	385	29.1%	34.3%	41.8%	52.5%	64.9%	78.7%	90.9%	95.3%	98.7%
408	Rommerskirchen	dep.	383	30.3%	35.5%	42.3%	53.3%	64.8%	78.6%	90.9%	95.3%	98.7%
501	ZEEBRUGGE-VORMING	arr.	12	50.0%	66.7%	75.0%	75.0%	83.3%	91.7%	100.0%	100.0%	100.0%
501	ZEEBRUGGE-VORMING	dep.	117	23.1%	42.7%	46.2%	54.7%	69.2%	88.9%	98.3%	99.2%	100.0%
502	Y.SCHIJN	arr.	188	28.7%	44.2%	52.7%	61.7%	72.3%	86.2%	97.3%	98.9%	100.0%
502	Y.SCHIJN	dep.	294	21.8%	37.1%	48.0%	58.5%	71.1%	87.1%	98.0%	99.7%	100.0%
503	AARSCHOT	arr.	252	18.2%	30.2%	37.7%	50.0%	64.7%	85.7%	96.4%	98.8%	100.0%
503	AARSCHOT	dep.	252	18.2%	30.2%	38.1%	50.0%	64.7%	85.7%	96.4%	98.8%	100.0%
504	DIEST	arr.	441	21.8%	32.0%	41.5%	53.5%	67.4%	86.2%	96.6%	99.1%	100.0%
504	DIEST	dep.	441	21.8%	32.2%	41.5%	53.5%	67.4%	86.2%	96.6%	99.1%	100.0%
505	MONTZEN-FRONTIERE	arr.	576	36.5%	41.7%	47.0%	56.1%	69.6%	86.5%	96.4%	99.0%	100.0%
505	MONTZEN-FRONTIERE	dep.	573	36.6%	41.9%	47.1%	56.2%	69.6%	86.6%	96.3%	99.0%	100.0%
506	Aachen West Pbf	arr.	573	34.7%	39.4%	45.6%	53.9%	66.5%	82.9%	94.1%	97.4%	99.6%
506	Aachen West Pbf	dep.	549	26.8%	31.9%	38.6%	45.9%	57.6%	75.2%	87.8%	94.5%	99.4%

Order	Name	Status	# of train runs	< 0 min.	≤ 5 min.	≤ 15 min.	≤ 30 min.	≤ 60 min.	≤ 120 min.	≤ 240 min.	≤ 360 min.	≤ 720 min.
509	Aachen West Gbf	arr.	89	41.6%	47.2%	53.9%	60.7%	66.3%	84.3%	95.5%	98.9%	100.0%
509	Aachen West Gbf	dep.	89	41.6%	47.2%	53.9%	60.7%	66.3%	84.3%	95.5%	98.9%	100.0%
510	Horrem	arr.	490	27.6%	32.9%	38.4%	46.5%	59.0%	73.3%	88.0%	93.9%	99.4%
510	Horrem	dep.	489	28.0%	33.3%	38.8%	46.8%	59.1%	73.4%	87.9%	93.9%	99.4%
601	Stein-Säckingen	arr.	899	39.6%	52.8%	64.8%	76.3%	87.4%	95.9%	99.0%	99.4%	100.0%
601	Stein-Säckingen	dep.	899	39.6%	52.8%	64.8%	76.3%	87.4%	95.9%	99.0%	99.4%	100.0%
602	Arth-Goldau	arr.	878	50.9%	61.7%	70.0%	79.3%	90.1%	95.9%	98.9%	99.5%	100.0%
602	Arth-Goldau	dep.	877	48.8%	61.4%	70.1%	79.5%	89.8%	96.0%	98.9%	99.5%	100.0%
603	Rynächt Nord	arr.	856	47.2%	60.5%	70.9%	80.0%	90.5%	95.6%	98.8%	99.5%	100.0%
603	Rynächt Nord	dep.	856	47.2%	60.5%	70.9%	80.0%	90.5%	95.6%	98.8%	99.5%	100.0%
605	Giustizia (dira)	arr.	871	71.9%	77.5%	81.3%	87.5%	93.0%	96.4%	98.8%	99.8%	100.0%
605	Giustizia (dira)	dep.	871	72.1%	77.6%	81.4%	87.7%	93.1%	96.4%	98.8%	99.8%	100.0%
606	Bellinzona S. Paolo	arr.	869	52.5%	68.1%	76.2%	84.0%	91.1%	95.7%	98.6%	99.6%	100.0%
606	Bellinzona S. Paolo	dep.	863	46.8%	66.6%	77.4%	84.4%	91.2%	95.7%	98.6%	99.6%	100.0%
607	Mendrisio	arr.	378	54.5%	72.5%	79.4%	86.8%	92.6%	95.2%	98.7%	99.7%	100.0%
607	Mendrisio	dep.	378	54.5%	72.8%	79.4%	86.8%	92.6%	95.2%	98.7%	99.7%	100.0%
609	Chiasso	arr.	203	47.8%	59.1%	70.9%	84.7%	91.1%	94.1%	99.5%	100.0%	100.0%
609	Chiasso	dep.	203	47.8%	59.1%	70.9%	84.7%	91.1%	94.1%	99.5%	100.0%	100.0%
610	Chiasso Smistamento	arr.	376	52.9%	71.5%	78.7%	85.6%	92.3%	95.5%	98.7%	99.7%	100.0%
610	Chiasso Smistamento	dep.	237	50.2%	67.5%	73.8%	82.3%	89.4%	93.7%	97.9%	99.6%	100.0%
611	BIVIO/PC ROSALES	arr.	204	45.1%	57.8%	70.1%	81.9%	90.2%	94.1%	99.0%	100.0%	100.0%
611	BIVIO/PC ROSALES	dep.	204	45.1%	57.8%	70.1%	81.9%	90.2%	94.1%	99.0%	100.0%	100.0%
612	CARIMATE	arr.	203	42.4%	57.1%	69.0%	81.3%	90.2%	94.1%	99.0%	100.0%	100.0%
612	CARIMATE	dep.	203	42.4%	57.1%	69.0%	81.3%	90.2%	94.1%	99.0%	100.0%	100.0%
613	SEREGNO	arr.	199	48.7%	63.3%	73.4%	83.9%	92.0%	96.5%	100.0%	100.0%	100.0%
613	SEREGNO	dep.	199	48.7%	63.3%	73.4%	83.9%	92.0%	96.5%	100.0%	100.0%	100.0%
614	DESIO	arr.	194	47.9%	62.9%	73.7%	85.0%	93.8%	97.4%	100.0%	100.0%	100.0%
614	DESIO	dep.	194	47.9%	62.9%	73.7%	85.0%	93.8%	97.4%	100.0%	100.0%	100.0%
615	MILANO GRECO PIRELLI	arr.	199	39.7%	51.3%	66.8%	77.9%	88.4%	94.5%	99.5%	100.0%	100.0%

Order	Name	Status	# of train runs	< 0 min.	≤ 5 min.	≤ 15 min.	≤ 30 min.	≤ 60 min.	≤ 120 min.	≤ 240 min.	≤ 360 min.	≤ 720 min.
615	MILANO GRECO PIRELLI	dep.	199	39.7%	51.3%	66.8%	77.9%	88.4%	94.5%	99.5%	100.0%	100.0%
616	MILANO LAMBRATE	arr.	310	31.3%	41.9%	54.2%	66.8%	78.4%	91.0%	98.4%	98.7%	100.0%
616	MILANO LAMBRATE	dep.	309	31.7%	42.1%	54.0%	66.7%	78.3%	90.9%	98.4%	98.7%	100.0%
617	MILANO SM.	arr.	191	35.6%	47.6%	59.2%	70.7%	81.7%	92.7%	99.0%	99.5%	100.0%
617	MILANO SM.	dep.	78	19.2%	28.2%	37.2%	50.0%	73.1%	91.0%	97.4%	100.0%	100.0%
618	MELZO SCALO	arr.	102	11.8%	17.6%	29.4%	36.3%	58.8%	88.2%	95.1%	98.0%	100.0%
618	MELZO SCALO	dep.	37	5.4%	10.8%	32.4%	43.2%	73.0%	94.6%	97.3%	100.0%	100.0%
701	Liestal	arr.	842	26.1%	41.6%	49.3%	60.6%	76.1%	87.3%	95.5%	98.1%	100.0%
701	Liestal	dep.	842	26.1%	41.6%	49.3%	60.6%	76.1%	87.3%	95.5%	98.1%	100.0%
702	Olten	arr.	859	28.2%	43.5%	49.5%	60.5%	76.6%	88.1%	95.2%	98.4%	100.0%
702	Olten	dep.	859	27.9%	43.7%	49.5%	60.5%	76.4%	88.1%	95.2%	98.4%	100.0%
704	Thun	arr.	819	34.8%	49.9%	54.7%	62.9%	76.3%	87.9%	95.8%	98.5%	100.0%
704	Thun	dep.	820	34.9%	50.1%	54.8%	62.8%	76.2%	87.9%	95.8%	98.5%	100.0%
705	Spiez	arr.	821	41.3%	51.0%	56.0%	63.8%	77.2%	88.2%	95.9%	98.5%	100.0%
705	Spiez	dep.	820	33.8%	41.1%	52.1%	61.6%	75.8%	87.8%	95.8%	98.5%	100.0%
706	Brig	arr.	837	33.7%	43.2%	52.8%	59.9%	72.8%	86.5%	95.2%	98.3%	100.0%
706	Brig	dep.	831	29.0%	40.3%	50.9%	59.9%	71.5%	86.8%	95.4%	98.3%	100.0%
707	Brig Tunnel	arr.	832	29.1%	41.1%	51.1%	59.9%	71.9%	86.7%	95.6%	98.3%	100.0%
707	Brig Tunnel	dep.	832	29.1%	41.1%	51.1%	59.9%	71.9%	86.7%	95.6%	98.3%	100.0%
708	DOMODOSSOLA	arr.	173	23.7%	34.1%	48.0%	58.4%	78.0%	97.7%	100.0%	100.0%	100.0%
708	DOMODOSSOLA	dep.	198	14.1%	21.7%	33.3%	45.0%	63.1%	92.4%	99.5%	100.0%	100.0%
709	DOMO II	arr.	574	29.8%	35.7%	44.6%	52.4%	65.3%	81.9%	94.4%	98.6%	100.0%
709	DOMO II	dep.	416	46.6%	55.3%	62.7%	71.6%	85.6%	95.0%	99.5%	99.8%	100.0%
710	PREMOSELLO CHIOVENDA	arr.	607	29.6%	39.5%	48.1%	57.8%	75.1%	91.9%	99.3%	100.0%	100.0%
710	PREMOSELLO CHIOVENDA	dep.	609	28.4%	38.4%	47.3%	56.6%	74.7%	91.6%	99.3%	100.0%	100.0%
711	OMEGNA	arr.	348	25.3%	34.8%	44.8%	56.6%	74.4%	91.4%	99.4%	100.0%	100.0%
711	OMEGNA	dep.	348	25.3%	35.6%	49.7%	59.2%	75.0%	92.2%	99.4%	100.0%	100.0%
712	BORGOMANERO	arr.	348	34.8%	43.4%	53.2%	60.1%	75.6%	93.4%	99.4%	100.0%	100.0%
712	BORGOMANERO	dep.	348	35.9%	44.0%	53.4%	59.8%	75.9%	94.0%	99.4%	100.0%	100.0%



Order	Name	Status	# of train runs	< 0 min.	≤ 5 min.	≤ 15 min.	≤ 30 min.	≤ 60 min.	≤ 120 min.	≤ 240 min.	≤ 360 min.	≤ 720 min.
713	VIGNALE	arr.	453	31.6%	40.0%	49.9%	58.1%	71.1%	90.7%	98.9%	100.0%	100.0%
713	VIGNALE	dep.	453	31.6%	40.0%	49.9%	58.1%	71.1%	90.7%	98.9%	100.0%	100.0%
714	NOVARA	arr.	454	26.4%	33.7%	43.6%	55.7%	70.0%	89.0%	98.7%	100.0%	100.0%
714	NOVARA	dep.	454	25.3%	32.4%	43.2%	55.5%	69.8%	88.8%	98.7%	100.0%	100.0%
715	NOVARA BOSCHETTO	arr.	397	30.5%	36.8%	47.6%	57.9%	71.3%	91.9%	99.2%	100.0%	100.0%
715	NOVARA BOSCHETTO	dep.	31	25.8%	35.5%	54.8%	58.1%	67.7%	90.3%	100.0%	100.0%	100.0%
716	ALESSANDRIA	arr.	2	0.0%	50.0%	50.0%	50.0%	50.0%	100.0%	100.0%	100.0%	100.0%
716	ALESSANDRIA	dep.	2	0.0%	50.0%	50.0%	50.0%	50.0%	100.0%	100.0%	100.0%	100.0%
718	GENOVA MARITTIMA	arr.	2	0.0%	0.0%	50.0%	50.0%	50.0%	100.0%	100.0%	100.0%	100.0%
801	STRESA	arr.	256	37.9%	44.9%	55.5%	66.0%	80.9%	92.6%	99.2%	100.0%	100.0%
801	STRESA	dep.	256	37.9%	44.9%	55.5%	66.0%	80.9%	92.6%	99.2%	100.0%	100.0%
802	ARONA	arr.	258	36.4%	43.4%	53.5%	66.3%	79.1%	92.2%	99.2%	100.0%	100.0%
802	ARONA	dep.	258	37.6%	43.0%	51.9%	65.5%	78.7%	91.1%	99.2%	100.0%	100.0%
803	SESTO CALENDE	arr.	530	32.8%	45.5%	56.8%	67.9%	83.4%	94.7%	98.9%	99.8%	100.0%
803	SESTO CALENDE	dep.	530	32.8%	45.5%	56.8%	67.9%	83.4%	94.7%	98.9%	99.8%	100.0%
804	GALLARATE	arr.	580	29.1%	40.2%	52.2%	66.9%	81.7%	95.0%	98.8%	99.5%	100.0%
804	GALLARATE	dep.	157	28.7%	38.2%	44.6%	63.1%	75.8%	89.8%	96.2%	98.1%	100.0%
805	BUSTO ARSIZIO	arr.	139	27.3%	38.8%	43.9%	55.4%	71.9%	88.5%	95.0%	97.1%	100.0%
805	BUSTO ARSIZIO	dep.	133	25.6%	39.8%	48.1%	54.1%	72.2%	89.5%	95.5%	97.0%	100.0%
806	RHO	arr.	133	23.3%	32.3%	47.4%	51.1%	66.9%	88.0%	94.7%	97.0%	100.0%
806	RHO	dep.	133	23.3%	32.3%	47.4%	51.1%	66.9%	88.0%	94.7%	97.0%	100.0%
807	MILANO CERTOSA	arr.	131	25.2%	32.8%	47.3%	55.7%	70.2%	91.6%	97.0%	97.7%	100.0%
807	MILANO CERTOSA	dep.	131	25.2%	32.8%	48.1%	57.2%	71.0%	91.6%	97.7%	97.7%	100.0%
901	LUINO	arr.	447	54.6%	65.6%	74.7%	81.2%	91.0%	96.9%	98.4%	99.8%	100.0%
901	LUINO	dep.	486	37.0%	53.9%	64.6%	74.9%	86.6%	95.7%	98.8%	99.6%	100.0%
902	LAVENO MOMBELLO	arr.	457	41.1%	53.8%	63.9%	73.7%	85.6%	95.4%	98.9%	99.8%	100.0%
902	LAVENO MOMBELLO	dep.	457	44.0%	55.8%	65.0%	74.2%	85.6%	95.2%	98.9%	99.8%	100.0%

## Punctuality and number of trains per location

### South-North

Order	Name	Status	# of train runs	< 0 min.	≤ 5 min.	≤ 15 min.	≤ 30 min.	≤ 60 min.	≤ 120 min.	≤ 240 min.	≤ 360 min.	≤ 720 min.
101	LAVENO MOMBELLO	arr.	452	18.6%	28.5%	41.8%	54.0%	77.0%	94.7%	99.8%	99.8%	100.0%
101	LAVENO MOMBELLO	dep.	454	20.9%	31.5%	43.6%	55.5%	77.1%	94.3%	99.8%	99.8%	100.0%
102	LUINO	arr.	507	26.0%	34.3%	47.1%	59.0%	79.9%	92.1%	96.8%	98.2%	100.0%
102	LUINO	dep.	487	25.0%	34.3%	47.0%	59.3%	80.7%	92.2%	97.3%	98.6%	100.0%
103	MILANO CERTOSA	arr.	124	25.8%	27.4%	32.3%	42.7%	69.4%	91.1%	99.2%	100.0%	100.0%
103	MILANO CERTOSA	dep.	124	25.8%	27.4%	32.3%	42.7%	71.0%	91.1%	99.2%	100.0%	100.0%
104	RHO	arr.	110	29.1%	31.8%	36.4%	45.4%	65.4%	86.4%	99.1%	100.0%	100.0%
104	RHO	dep.	110	29.1%	31.8%	36.4%	45.4%	65.4%	86.4%	99.1%	100.0%	100.0%
201	BUSTO ARSIZIO	arr.	109	26.6%	31.2%	36.7%	45.9%	62.4%	85.3%	98.2%	99.1%	100.0%
201	BUSTO ARSIZIO	dep.	115	31.3%	35.6%	40.9%	49.6%	65.2%	85.2%	98.3%	99.1%	100.0%
202	GALLARATE	arr.	124	29.0%	31.4%	37.1%	46.8%	68.6%	85.5%	98.4%	99.2%	100.0%
202	GALLARATE	dep.	557	23.2%	35.7%	49.7%	63.0%	82.9%	94.4%	99.6%	99.8%	100.0%
203	SESTO CALENDE	arr.	398	24.6%	33.2%	47.0%	58.8%	78.6%	92.7%	99.5%	99.8%	100.0%
203	SESTO CALENDE	dep.	398	24.6%	33.2%	47.0%	58.8%	78.6%	92.7%	99.5%	99.8%	100.0%
204	ARONA	arr.	240	38.3%	45.0%	52.1%	60.4%	77.1%	90.8%	99.6%	100.0%	100.0%
204	ARONA	dep.	240	36.7%	43.3%	51.7%	60.4%	75.0%	90.8%	99.6%	100.0%	100.0%
205	STRESA	arr.	241	35.7%	41.1%	48.1%	58.5%	74.3%	90.9%	99.6%	100.0%	100.0%
205	STRESA	dep.	241	35.7%	41.1%	48.1%	58.5%	74.3%	90.9%	99.6%	100.0%	100.0%
206	GENOVA MARITTIMA	dep.	8	25.0%	62.5%	62.5%	62.5%	62.5%	100.0%	100.0%	100.0%	100.0%
208	ALESSANDRIA	arr.	16	43.8%	43.8%	50.0%	62.5%	75.0%	100.0%	100.0%	100.0%	100.0%
208	ALESSANDRIA	dep.	16	31.2%	37.5%	37.5%	43.8%	75.0%	93.8%	100.0%	100.0%	100.0%
209	NOVARA BOSCHETTO	arr.	47	34.0%	44.7%	53.2%	59.6%	78.7%	91.5%	97.9%	100.0%	100.0%
209	NOVARA BOSCHETTO	dep.	410	33.7%	47.8%	67.1%	76.6%	87.6%	97.8%	99.8%	100.0%	100.0%
301	NOVARA	arr.	465	42.2%	55.3%	68.8%	75.7%	88.0%	97.4%	99.8%	100.0%	100.0%
301	NOVARA	dep.	465	41.7%	55.0%	68.8%	75.5%	88.0%	97.4%	99.8%	100.0%	100.0%

Order	Name	Status	# of train runs	< 0 min.	≤ 5 min.	≤ 15 min.	≤ 30 min.	≤ 60 min.	≤ 120 min.	≤ 240 min.	≤ 360 min.	≤ 720 min.
302	VIGNALE	arr.	466	34.6%	52.4%	67.4%	75.5%	86.9%	97.2%	99.8%	100.0%	100.0%
302	VIGNALE	dep.	466	36.5%	52.2%	67.6%	75.5%	87.1%	97.4%	99.8%	100.0%	100.0%
303	BORGOMANERO	arr.	352	46.3%	59.7%	69.3%	76.7%	87.8%	96.3%	100.0%	100.0%	100.0%
303	BORGOMANERO	dep.	352	53.1%	63.6%	70.7%	79.0%	87.8%	96.6%	100.0%	100.0%	100.0%
304	OMEGNA	arr.	352	37.8%	53.1%	66.2%	77.6%	85.8%	96.3%	99.7%	100.0%	100.0%
304	OMEGNA	dep.	352	37.2%	56.2%	69.3%	78.7%	86.4%	96.9%	99.7%	100.0%	100.0%
305	PREMOSELLO CHIOVENDA	arr.	590	33.0%	42.7%	55.2%	67.0%	80.0%	93.4%	99.7%	100.0%	100.0%
305	PREMOSELLO CHIOVENDA	dep.	590	32.9%	42.5%	55.2%	66.8%	79.8%	93.4%	99.7%	100.0%	100.0%
306	DOMO II	arr.	497	38.4%	44.1%	52.5%	60.0%	72.6%	86.3%	96.4%	98.4%	100.0%
306	DOMO II	dep.	505	33.9%	39.2%	48.5%	60.2%	76.2%	89.3%	95.0%	97.4%	100.0%
307	DOMODOSSOLA	arr.	197	32.5%	37.1%	50.2%	66.5%	83.2%	97.5%	100.0%	100.0%	100.0%
307	DOMODOSSOLA	dep.	170	15.9%	21.2%	30.6%	48.2%	75.3%	95.3%	100.0%	100.0%	100.0%
308	Brig Tunnel	arr.	762	21.6%	29.0%	38.8%	50.1%	71.6%	90.0%	96.3%	97.8%	100.0%
308	Brig Tunnel	dep.	762	21.6%	29.0%	39.0%	50.1%	71.8%	90.0%	96.3%	97.8%	100.0%
309	Brig	arr.	762	26.6%	31.8%	40.8%	53.0%	73.1%	90.3%	96.5%	97.8%	100.0%
309	Brig	dep.	763	24.4%	33.3%	41.8%	54.5%	72.4%	90.2%	95.9%	97.6%	100.0%
310	Spiez	arr.	765	27.1%	35.3%	43.5%	54.1%	70.1%	89.0%	96.1%	97.5%	100.0%
310	Spiez	dep.	762	24.7%	34.9%	41.3%	53.5%	69.3%	87.7%	96.1%	97.4%	100.0%
311	Thun	arr.	763	23.7%	33.8%	40.6%	51.6%	69.2%	87.2%	96.1%	97.4%	100.0%
311	Thun	dep.	761	23.5%	33.9%	40.5%	51.9%	69.4%	87.1%	95.9%	97.4%	100.0%
313	Olten	arr.	776	28.6%	38.3%	43.0%	52.2%	69.7%	88.0%	96.1%	97.7%	100.0%
313	Olten	dep.	776	29.5%	38.3%	43.0%	52.2%	69.8%	88.0%	96.1%	97.7%	100.0%
314	Liestal	arr.	773	30.4%	39.2%	44.6%	52.8%	69.9%	87.8%	96.1%	97.7%	100.0%
314	Liestal	dep.	773	30.4%	39.2%	44.6%	52.8%	69.9%	87.8%	96.1%	97.7%	100.0%
315	MELZO SCALO	arr.	44	25.0%	38.6%	43.2%	63.6%	84.1%	100.0%	100.0%	100.0%	100.0%
315	MELZO SCALO	dep.	134	35.8%	44.0%	52.2%	65.7%	79.8%	99.2%	100.0%	100.0%	100.0%
316	MILANO SM.	arr.	70	28.6%	42.9%	50.0%	65.7%	82.9%	98.6%	100.0%	100.0%	100.0%
316	MILANO SM.	dep.	172	44.8%	68.0%	79.6%	85.5%	95.9%	98.8%	99.4%	100.0%	100.0%
317	MILANO LAMBRATE	arr.	284	34.5%	44.7%	59.2%	69.0%	83.4%	94.0%	98.6%	99.6%	100.0%

Order	Name	Status	# of train runs	< 0 min.	≤ 5 min.	≤ 15 min.	≤ 30 min.	≤ 60 min.	≤ 120 min.	≤ 240 min.	≤ 360 min.	≤ 720 min.
317	MILANO LAMBRATE	dep.	284	34.5%	44.7%	59.2%	69.0%	83.4%	94.0%	98.6%	99.6%	100.0%
318	MILANO GRECO PIRELLI	arr.	197	27.9%	44.2%	57.9%	72.6%	87.3%	95.9%	98.0%	99.0%	100.0%
318	MILANO GRECO PIRELLI	dep.	197	27.9%	44.2%	57.9%	73.1%	87.3%	95.9%	98.0%	99.0%	100.0%
319	DESIO	arr.	195	29.7%	50.3%	58.5%	71.3%	87.7%	96.9%	98.5%	99.5%	100.0%
319	DESIO	dep.	195	29.7%	50.3%	58.5%	71.3%	87.7%	96.9%	98.5%	99.5%	100.0%
320	SEREGNO	arr.	195	35.9%	52.8%	59.5%	72.3%	88.2%	96.9%	98.5%	99.5%	100.0%
320	SEREGNO	dep.	195	35.9%	52.8%	59.5%	72.3%	88.2%	96.9%	98.5%	99.5%	100.0%
321	CARIMATE	arr.	198	36.9%	50.5%	58.1%	71.2%	86.4%	97.0%	98.0%	99.0%	100.0%
321	CARIMATE	dep.	198	38.4%	50.5%	58.6%	71.2%	86.4%	97.0%	98.0%	99.0%	100.0%
322	BIVIO/PC ROSALES	arr.	198	41.9%	53.0%	61.1%	72.2%	88.9%	97.0%	98.0%	99.0%	100.0%
322	BIVIO/PC ROSALES	dep.	198	41.9%	53.0%	61.1%	72.2%	88.9%	97.0%	98.0%	99.0%	100.0%
323	Chiasso Smistamento	arr.	233	59.2%	64.8%	76.8%	82.0%	89.3%	94.0%	98.3%	99.1%	100.0%
323	Chiasso Smistamento	dep.	362	62.4%	72.6%	82.6%	87.3%	93.1%	96.1%	98.9%	99.4%	100.0%
324	Chiasso	arr.	202	35.2%	46.5%	58.9%	71.3%	86.1%	96.0%	97.5%	99.0%	100.0%
324	Chiasso	dep.	202	35.2%	46.5%	58.9%	71.3%	86.1%	96.0%	97.5%	99.0%	100.0%
325	Balerna	arr.	1	100.0%	100.0%	100.0%	100.0%	100.0%	100.0%	100.0%	100.0%	100.0%
325	Balerna	dep.	1	100.0%	100.0%	100.0%	100.0%	100.0%	100.0%	100.0%	100.0%	100.0%
326	Mendrisio	arr.	380	57.6%	71.6%	82.1%	87.1%	93.7%	96.3%	99.0%	99.5%	100.0%
326	Mendrisio	dep.	380	57.6%	71.6%	82.1%	87.1%	93.7%	96.3%	99.0%	99.5%	100.0%
327	Bellinzona S. Paolo	arr.	874	40.5%	53.4%	60.2%	73.0%	85.1%	93.6%	97.5%	98.9%	100.0%
327	Bellinzona S. Paolo	dep.	874	39.4%	52.2%	59.4%	72.2%	85.2%	93.7%	97.2%	98.7%	100.0%
328	Giustizia (dira)	arr.	873	41.7%	52.1%	59.4%	72.4%	85.0%	93.4%	97.2%	98.6%	100.0%
328	Giustizia (dira)	dep.	873	41.7%	52.1%	59.4%	72.4%	85.0%	93.4%	97.2%	98.6%	100.0%
330	Rynächt Nord	arr.	879	52.9%	62.0%	70.0%	76.8%	87.5%	93.6%	97.5%	98.8%	100.0%
330	Rynächt Nord	dep.	879	52.9%	62.0%	70.0%	76.8%	87.5%	93.6%	97.5%	98.8%	100.0%
331	Arth-Goldau	arr.	879	58.2%	65.5%	71.8%	78.7%	88.3%	94.2%	97.4%	98.4%	100.0%
331	Arth-Goldau	dep.	879	56.7%	64.6%	71.6%	78.8%	88.2%	94.3%	97.4%	98.3%	100.0%
332	Stein-Säckingen	arr.	883	60.6%	73.5%	76.7%	82.1%	90.5%	95.1%	97.5%	98.4%	100.0%
332	Stein-Säckingen	dep.	883	60.6%	73.5%	76.7%	82.1%	90.5%	95.1%	97.5%	98.4%	100.0%

Order	Name	Status	# of train runs	< 0 min.	≤ 5 min.	≤ 15 min.	≤ 30 min.	≤ 60 min.	≤ 120 min.	≤ 240 min.	≤ 360 min.	≤ 720 min.
333	Horrem	arr.	491	33.0%	36.0%	40.1%	47.7%	56.6%	69.6%	83.5%	91.2%	98.0%
333	Horrem	dep.	491	34.2%	37.7%	41.8%	48.7%	56.8%	69.6%	83.5%	91.2%	98.0%
334	Aachen West Gbf	arr.	84	39.3%	42.9%	47.6%	59.5%	66.7%	78.6%	91.7%	96.4%	97.6%
334	Aachen West Gbf	dep.	83	39.8%	43.4%	48.2%	60.2%	67.5%	79.5%	91.6%	96.4%	97.6%
337	Aachen West Pbf	arr.	572	36.7%	40.2%	44.9%	52.3%	60.1%	71.3%	85.0%	91.3%	97.6%
337	Aachen West Pbf	dep.	521	37.8%	41.1%	45.7%	51.2%	57.8%	70.2%	84.4%	90.0%	97.7%
338	MONTZEN-FRONTIERE	arr.	558	39.2%	43.6%	48.4%	55.4%	64.0%	76.7%	91.4%	96.2%	100.0%
338	MONTZEN-FRONTIERE	dep.	557	39.3%	43.6%	48.3%	55.3%	63.9%	76.7%	91.4%	96.2%	100.0%
401	DIEST	arr.	424	46.0%	49.5%	54.7%	59.4%	66.5%	79.5%	92.0%	96.7%	100.0%
401	DIEST	dep.	424	46.0%	49.5%	54.7%	59.4%	66.5%	79.5%	92.0%	96.7%	100.0%
402	AARSCHOT	arr.	240	46.7%	49.6%	53.3%	55.8%	63.8%	79.2%	90.8%	97.5%	100.0%
402	AARSCHOT	dep.	240	46.7%	49.6%	53.3%	55.8%	64.2%	79.6%	90.8%	97.5%	100.0%
403	Y.SCHIJN	arr.	299	40.8%	44.8%	50.5%	57.2%	64.9%	78.6%	92.0%	96.0%	100.0%
403	Y.SCHIJN	dep.	148	37.8%	44.6%	50.7%	58.8%	67.6%	79.0%	91.9%	93.9%	100.0%
404	ZEEBRUGGE-VORMING	arr.	114	31.6%	36.0%	41.2%	44.7%	50.0%	66.7%	85.1%	94.7%	99.1%
404	ZEEBRUGGE-VORMING	dep.	15	26.7%	46.7%	46.7%	60.0%	80.0%	86.7%	86.7%	93.3%	93.3%
405	Rommerskirchen	arr.	412	37.1%	40.3%	43.9%	50.7%	60.4%	73.5%	88.4%	92.0%	98.1%
405	Rommerskirchen	dep.	409	38.6%	41.6%	45.5%	51.8%	61.4%	73.6%	88.3%	92.4%	98.0%
406	Kaldenkirchen	arr.	562	33.6%	36.8%	42.4%	51.2%	61.0%	74.6%	88.1%	93.6%	98.4%
406	Kaldenkirchen	dep.	540	34.8%	38.2%	43.9%	53.3%	63.2%	77.0%	89.3%	93.9%	98.5%
407	Venlo	arr.	569	38.3%	42.5%	48.2%	56.1%	67.5%	81.0%	92.1%	95.1%	99.0%
407	Venlo	dep.	566	29.2%	45.6%	49.6%	57.2%	66.1%	79.0%	91.2%	94.9%	98.6%
408	Eindhoven	arr.	536	27.0%	45.2%	49.6%	55.6%	65.1%	79.5%	92.0%	95.3%	98.7%
408	Eindhoven	dep.	538	27.0%	44.8%	49.4%	55.4%	65.2%	79.4%	92.0%	95.4%	98.7%
501	Breda aansl.	arr.	508	28.0%	43.7%	49.2%	55.3%	64.8%	78.4%	91.5%	95.1%	98.4%
501	Breda aansl.	dep.	508	28.0%	43.7%	49.2%	55.3%	64.8%	78.4%	91.5%	95.1%	98.4%
502	Kijfhoek aansl. Zuid	arr.	387	24.0%	39.0%	44.7%	51.9%	62.8%	77.3%	91.2%	94.3%	98.4%
502	Kijfhoek aansl. Zuid	dep.	387	24.0%	39.0%	44.7%	51.9%	62.8%	77.3%	91.2%	94.3%	98.4%
503	Roosendaal	arr.	176	25.0%	48.3%	55.7%	60.8%	71.0%	83.5%	93.8%	96.6%	98.3%

Order	Name	Status	# of train runs	< 0 min.	≤ 5 min.	≤ 15 min.	≤ 30 min.	≤ 60 min.	≤ 120 min.	≤ 240 min.	≤ 360 min.	≤ 720 min.
503	Roosendaal	dep.	178	28.1%	52.2%	57.3%	62.4%	70.2%	79.8%	92.7%	96.6%	98.3%
504	Sloehaven empl.	arr.	35	28.6%	65.7%	74.3%	74.3%	77.1%	82.9%	94.3%	97.1%	97.1%
504	Sloehaven empl.	dep.	12	33.3%	83.3%	83.3%	83.3%	100.0%	100.0%	100.0%	100.0%	100.0%
505	Basel SBB RB Gr B	arr.	1,656	46.1%	56.2%	61.3%	67.9%	80.2%	91.4%	96.7%	97.8%	100.0%
505	Basel SBB RB Gr B	dep.	1,888	33.2%	40.9%	49.8%	59.2%	72.1%	86.1%	94.2%	96.6%	99.9%
506	Basel SBB	arr.	140	41.4%	53.6%	70.0%	82.9%	93.6%	97.9%	98.6%	99.3%	100.0%
506	Basel SBB	dep.	140	40.0%	55.0%	68.6%	82.9%	93.6%	97.9%	98.6%	99.3%	100.0%
507	Gellert	arr.	1,181	34.0%	39.5%	47.6%	58.0%	70.8%	85.2%	94.8%	97.1%	100.0%
507	Gellert	dep.	1,181	34.0%	39.5%	47.6%	58.0%	70.8%	85.2%	94.8%	97.1%	100.0%
508	Basel Bad Bf	arr.	1,651	28.9%	34.1%	41.3%	52.1%	66.1%	82.3%	92.7%	95.3%	98.5%
508	Basel Bad Bf	dep.	1,694	29.0%	34.3%	41.3%	52.1%	66.1%	82.5%	92.7%	95.3%	98.4%
509	Basel Bad Rbf	arr.	133	44.4%	48.9%	54.1%	60.2%	68.4%	77.4%	95.5%	97.0%	100.0%
509	Basel Bad Rbf	dep.	108	24.1%	30.6%	37.0%	41.7%	50.0%	68.5%	88.9%	94.4%	99.1%
510	Weil am Rhein	arr.	1,596	25.9%	31.4%	38.7%	50.9%	65.7%	82.3%	92.4%	95.1%	98.4%
510	Weil am Rhein	dep.	1,563	26.3%	31.7%	39.7%	51.1%	64.8%	81.8%	91.8%	95.0%	98.4%
601	Haltingen	arr.	1,634	26.6%	31.6%	38.7%	50.2%	63.6%	80.7%	91.4%	94.8%	98.5%
601	Haltingen	dep.	1,637	26.6%	31.6%	38.6%	50.0%	63.4%	80.6%	91.3%	94.8%	98.5%
602	Freiburg (Breisgau) Hbf	arr.	382	30.6%	36.9%	44.2%	54.4%	65.2%	81.9%	92.4%	94.8%	97.9%
602	Freiburg (Breisgau) Hbf	dep.	383	30.8%	37.3%	44.6%	55.1%	66.1%	82.5%	92.7%	95.0%	97.6%
603	Freiburg (Breisgau) Gbf	arr.	1,149	26.0%	30.9%	37.4%	47.1%	61.8%	80.1%	90.8%	95.1%	99.0%
603	Freiburg (Breisgau) Gbf	dep.	923	34.2%	38.1%	44.5%	53.7%	66.0%	79.7%	89.4%	94.4%	98.7%
605	Offenburg	arr.	1,357	32.9%	38.1%	44.6%	52.6%	64.5%	78.7%	89.8%	94.2%	98.2%
605	Offenburg	dep.	1,340	32.8%	38.0%	44.2%	52.2%	64.1%	78.5%	89.7%	94.0%	98.1%
606	Karlsruhe Gbf	arr.	1,499	31.5%	37.3%	44.2%	52.1%	64.7%	78.3%	89.5%	94.0%	97.9%
606	Karlsruhe Gbf	dep.	1,372	37.5%	43.4%	49.7%	55.8%	66.6%	78.9%	89.3%	93.1%	98.0%
607	Ludwigshafen (Rhein) BASF Gbf	arr.	1	0.0%	0.0%	0.0%	0.0%	0.0%	100.0%	100.0%	100.0%	100.0%
607	Ludwigshafen (Rhein) BASF Gbf	dep.	24	41.7%	50.0%	50.0%	62.5%	75.0%	83.3%	91.7%	95.8%	95.8%
608	Ludwigshafen-Oggersheim	arr.	461	35.6%	37.7%	42.1%	49.9%	61.4%	75.7%	86.1%	91.5%	98.3%
608	Ludwigshafen-Oggersheim	dep.	462	32.7%	34.8%	39.0%	47.8%	59.5%	75.1%	86.4%	91.6%	98.3%

Order	Name	Status	# of train runs	< 0 min.	≤ 5 min.	≤ 15 min.	≤ 30 min.	≤ 60 min.	≤ 120 min.	≤ 240 min.	≤ 360 min.	≤ 720 min.
609	Ludwigshafen (Rhein) BASF Werksgrenze	arr.	160	30.6%	34.4%	38.8%	46.9%	63.1%	75.6%	85.6%	92.5%	97.5%
609	Ludwigshafen (Rhein) BASF Werksgrenze	dep.	160	30.6%	34.4%	38.8%	46.9%	63.1%	75.6%	85.6%	92.5%	97.5%
614	Mannheim Rbf	arr.	536	37.5%	44.2%	50.4%	56.2%	69.2%	81.3%	91.6%	95.9%	98.3%
614	Mannheim Rbf	dep.	356	31.7%	36.2%	42.1%	49.4%	63.8%	76.7%	89.3%	94.9%	97.8%
615	Mainz-Bischofsheim Überltg II	arr.	1,067	26.6%	30.3%	36.6%	43.4%	55.6%	72.1%	85.8%	91.9%	97.9%
615	Mainz-Bischofsheim Überltg II	dep.	1,063	27.6%	31.6%	37.4%	43.9%	55.7%	72.0%	85.0%	92.0%	98.0%
616	Mainz Hbf	arr.	388	35.0%	41.5%	45.1%	50.5%	61.1%	78.4%	88.1%	92.5%	98.7%
616	Mainz Hbf	dep.	385	35.3%	41.6%	45.4%	50.6%	60.8%	78.2%	88.3%	92.7%	98.7%
617	Wiesbaden Ost Gbf	arr.	821	29.4%	33.5%	38.0%	44.6%	57.6%	73.4%	86.6%	92.7%	97.7%
617	Wiesbaden Ost Gbf	dep.	818	30.1%	34.1%	39.0%	46.4%	58.4%	74.1%	86.7%	92.8%	97.7%
618	Troisdorf	arr.	1,154	37.1%	41.2%	45.1%	52.1%	61.6%	73.8%	86.3%	91.9%	98.1%
618	Troisdorf	dep.	1,150	37.1%	41.0%	45.0%	52.0%	61.6%	73.7%	86.3%	91.9%	98.1%
701	Hürth-Kalscheuren Südkopf	arr.	361	49.9%	52.6%	56.8%	61.2%	69.5%	82.3%	91.7%	93.6%	98.6%
701	Hürth-Kalscheuren Südkopf	dep.	361	49.9%	52.6%	56.8%	61.2%	69.5%	82.3%	91.7%	93.6%	98.6%
704	Köln Eifeltr	arr.	466	48.5%	51.7%	55.6%	60.5%	68.2%	81.1%	91.2%	93.6%	98.1%
704	Köln Eifeltr	dep.	389	47.6%	51.2%	55.5%	62.5%	69.9%	81.5%	91.8%	93.3%	97.9%
705	Köln-Longerich	arr.	201	39.3%	42.8%	44.3%	51.7%	60.2%	72.1%	86.1%	93.0%	98.0%
705	Köln-Longerich	dep.	201	38.8%	43.3%	44.3%	51.7%	60.7%	72.1%	86.1%	93.0%	98.0%
706	Opladen Mitte	arr.	393	46.8%	50.4%	54.7%	64.4%	75.1%	84.2%	92.6%	94.9%	98.5%
706	Opladen Mitte	dep.	391	48.6%	52.7%	56.8%	65.5%	76.0%	84.6%	92.6%	94.9%	98.5%
707	Oberhausen West Oro	arr.	444	43.2%	50.0%	56.1%	64.0%	72.8%	82.9%	88.3%	92.6%	98.0%
707	Oberhausen West Oro	dep.	624	42.3%	50.6%	57.8%	66.0%	76.8%	85.6%	90.5%	93.9%	98.4%
708	Oberhausen Hbf	arr.	48	37.5%	43.8%	47.9%	60.4%	81.2%	91.7%	91.7%	95.8%	97.9%
708	Oberhausen Hbf	dep.	47	38.3%	44.7%	48.9%	61.7%	80.8%	91.5%	91.5%	95.7%	97.9%
709	Oberhausen Mathilde	arr.	370	45.4%	50.8%	57.0%	64.6%	73.5%	82.7%	91.4%	93.2%	98.6%
709	Oberhausen Mathilde	dep.	370	45.4%	51.4%	57.3%	64.6%	73.5%	82.7%	91.4%	93.2%	98.6%
710	Oberhausen-Sterkrade	arr.	868	37.0%	45.2%	52.9%	62.4%	74.1%	85.2%	92.0%	94.2%	98.6%
710	Oberhausen-Sterkrade	dep.	866	37.4%	45.5%	53.0%	62.4%	74.1%	85.3%	91.9%	94.3%	98.6%
711	Emmerich	arr.	857	34.2%	42.2%	49.7%	57.8%	71.0%	84.4%	91.2%	94.2%	98.6%

Order	Name	Status	# of train runs	< 0 min.	≤ 5 min.	≤ 15 min.	≤ 30 min.	≤ 60 min.	≤ 120 min.	≤ 240 min.	≤ 360 min.	≤ 720 min.
711	Emmerich	dep.	839	32.4%	41.5%	49.3%	55.9%	69.1%	82.6%	90.5%	93.7%	98.1%
712	Zevenaar Oost	arr.	894	36.5%	48.8%	57.8%	64.0%	76.1%	86.5%	92.0%	95.0%	98.2%
712	Zevenaar Oost	dep.	894	36.5%	48.8%	57.8%	64.0%	76.1%	86.5%	92.0%	95.0%	98.2%
713	Betuweroute Meteren	arr.	880	35.1%	47.0%	56.7%	64.3%	75.6%	85.7%	91.6%	94.8%	98.1%
713	Betuweroute Meteren	dep.	880	35.1%	47.2%	56.7%	64.3%	75.6%	85.6%	91.6%	94.8%	98.1%
714	Betuwe Route Papendrecht	arr.	804	27.2%	40.4%	51.9%	61.9%	73.4%	86.0%	91.4%	94.6%	98.0%
714	Betuwe Route Papendrecht	dep.	804	27.2%	40.4%	51.9%	61.9%	73.4%	86.0%	91.4%	94.6%	98.0%
715	Kijfhoek zuid	arr.	1,141	27.5%	39.9%	48.8%	58.0%	68.8%	82.4%	91.1%	94.2%	98.1%
715	Kijfhoek zuid	dep.	1,132	27.3%	40.0%	48.8%	57.9%	68.5%	82.0%	90.6%	93.7%	97.7%
716	Kijfhoek Noord	arr.	1,126	26.7%	38.4%	47.8%	56.8%	68.4%	81.7%	90.3%	94.0%	97.9%
716	Kijfhoek Noord	dep.	875	25.5%	42.3%	47.8%	54.9%	65.6%	77.5%	88.2%	92.9%	97.5%
717	Waalhaven Zuid	arr.	176	23.3%	32.4%	34.7%	41.5%	51.1%	71.0%	85.8%	91.5%	96.6%
717	Waalhaven Zuid	dep.	58	27.6%	39.7%	43.1%	53.4%	65.5%	79.3%	89.7%	93.1%	98.3%
718	Pernis	arr.	694	28.5%	41.6%	50.1%	57.9%	68.9%	79.8%	88.6%	93.2%	97.8%
718	Pernis	dep.	672	28.6%	42.0%	50.6%	58.0%	69.2%	79.9%	89.0%	93.3%	97.8%
801	Botlek	arr.	647	28.4%	41.4%	50.2%	57.6%	68.5%	79.6%	88.9%	93.4%	97.7%
801	Botlek	dep.	613	29.2%	43.1%	51.2%	58.2%	69.2%	80.3%	89.4%	93.6%	97.6%
802	Europoort	arr.	581	30.1%	41.8%	50.3%	57.0%	67.8%	79.9%	89.7%	93.6%	97.6%
802	Europoort	dep.	541	31.8%	44.6%	53.0%	59.0%	69.9%	80.4%	89.8%	93.4%	97.4%
803	Maasvlakte	arr.	276	33.7%	46.7%	56.9%	63.0%	78.3%	86.6%	94.2%	96.7%	98.6%
803	Maasvlakte	dep.	2	50.0%	100.0%	100.0%	100.0%	100.0%	100.0%	100.0%	100.0%	100.0%
804	Maasvlakte West	arr.	185	30.8%	37.3%	43.8%	50.8%	57.8%	70.3%	84.9%	90.8%	95.7%
804	Maasvlakte West	dep.	28	35.7%	42.9%	46.4%	50.0%	53.6%	64.3%	78.6%	89.3%	100.0%
805	Maasvlakte Yangtzehaven Noord	arr.	15	33.3%	46.7%	60.0%	60.0%	60.0%	73.3%	93.3%	100.0%	100.0%
806	Amsterdam Centraal	arr.	74	24.3%	50.0%	60.8%	70.3%	83.8%	89.2%	96.0%	97.3%	98.6%
806	Amsterdam Centraal	dep.	74	24.3%	50.0%	60.8%	70.3%	83.8%	89.2%	96.0%	97.3%	98.6%
807	Houtrakpolder (Amsterdam)	arr.	36	19.4%	44.4%	52.8%	72.2%	86.1%	88.9%	88.9%	88.9%	91.7%
901	Beverwijk Hoogovens Centraal	arr.	23	17.4%	39.1%	56.5%	73.9%	78.3%	82.6%	95.6%	100.0%	100.0%
902	Amsterdam Westhaven	arr.	19	15.8%	21.0%	52.6%	63.2%	68.4%	79.0%	84.2%	94.7%	94.7%



Order	Name	Status	# of train runs	< 0 min.	≤ 5 min.	≤ 15 min.	≤ 30 min.	≤ 60 min.	≤ 120 min.	≤ 240 min.	≤ 360 min.	≤ 720 min.
902	Amsterdam Westhaven	dep.	3	66.7%	66.7%	66.7%	66.7%	66.7%	100.0%	100.0%	100.0%	100.0%